



FIRST
INTERSTATE
CENTER | for
the arts

First Interstate Center for the Arts
334 West Spokane Falls Blvd.
Spokane, WA 99201
(509)279-7000
(509)279-7060 fax
www.firstinterstatecenter.org
www.spokanepfd.org

FIRST INTERSTATE CENTER FOR THE ARTS TECHNICAL INFO PACKET

V 2.4
9.24.24



The Facility

The First Interstate Center for the Arts was built in 1974 for the World's Fair, Expo '74. It is a multi-purpose auditorium with 2609 seats, continental style, on 3 levels. The seating capacities are: 1722 on the orchestra level, 469 on the terrace level, 340 on the balcony level, and 78 within the orchestra pit when seated.

The Facility is owned and operated by the Spokane Public Facilities District.
www.spokanepfd.org

Mission Statement

The Spokane Public Facilities District's mission is to operate the finest public assembly facilities and provide the highest quality of Guest Services in a manner that ensures profitable operations and financial sustainability, returns value to the stakeholders, and maximizes economic impact to the Inland Northwest.

CONTACT LIST

Spokane Public Facilities District Staff

Director of Entertainment

Matt Meyer 509-279-7046 mmeyer@spokanepfd.org

Booking Manager

Josh Meagher 406-552-5313 jmeagher@spokanepfd.org

Event Manager

Leslie Yost-Waits 509-939-6625 lyostwaits@spokanepfd.org

Production Manager

Erik Young 509-869-1892 eyoung@spokanepfd.org

Technical and Audio-Visual Services

Daniel Urzika 425-346-7445 durzika@spokanepfd.org

Building Vendor Contact List

Stagehands / I.A.T.S.E. Local #93

Maria Sorce - Business Agent 414-828-8266 createtheatrearts@gmail.com

Pat Devereaux - Call Steward 509-999-5073 patdevereaux@aol.com

Catering, Concessions, & Food Service

Levy www.levyrestaurants.com

Ashley Pearce – Backstage Catering Sales 716-238-1049 apearce@levyrestaurants.com

Security / Crowd Management

Contemporary Services Corporation www.csc-usa.com

Jennifer Gunderson – Branch Manager 509-473-0396 jgunderson@csc-usa.com

Box Office / Ticketing

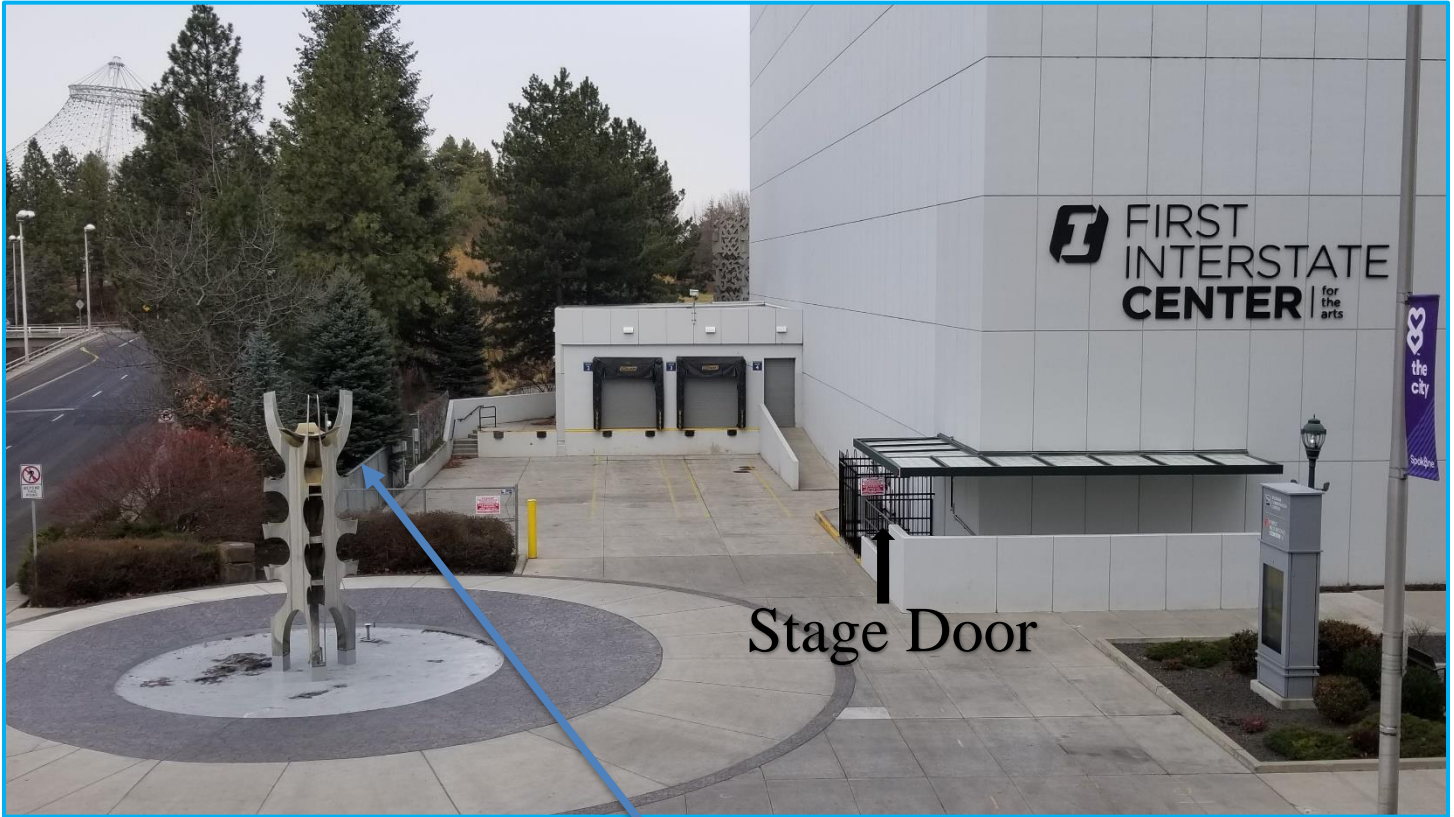
TicketsWest 1-800-325-SEAT www.ticketswest.com

Mackenzie Kirk - Box Office Manager 949-258-3507 mkirk@paciolan.com

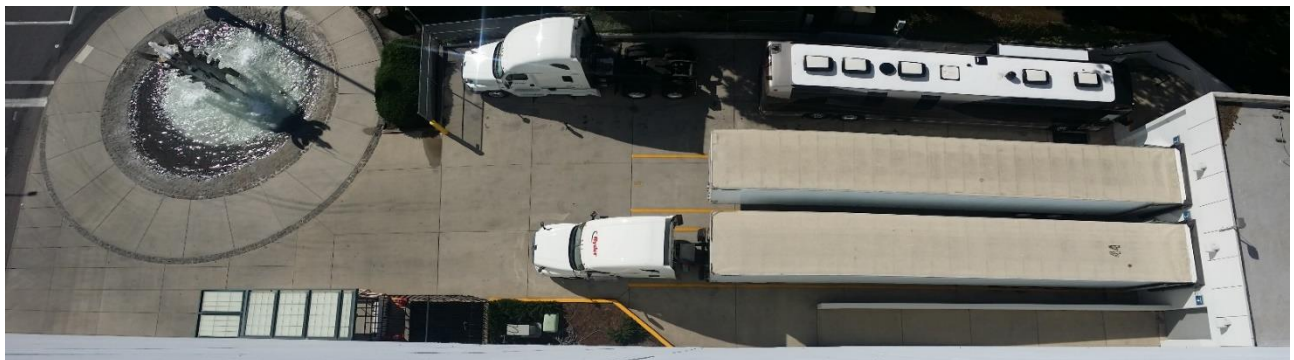
Loading Dock / Stage Door

The 3 truck loading dock located at the rear of the First Interstate Center for the Arts, on the NE corner of Spokane Falls Blvd. and Washington St., enables you to unload and load into the staging area located upstage left. The loading dock height is 46" and is at the same level as the stage. There are 2 main loading dock doors each measuring 10'H x 8'W and 1 door measuring 10'H x 7'W.

Shore Power – 2 disconnect boxes, each with 1 standard 20 amp GFCI outlet, 1 - 30 amp TT-30R, & 1 – 50 amp 14-50R connections, see pictures below.



(Shore Power Location x 2)

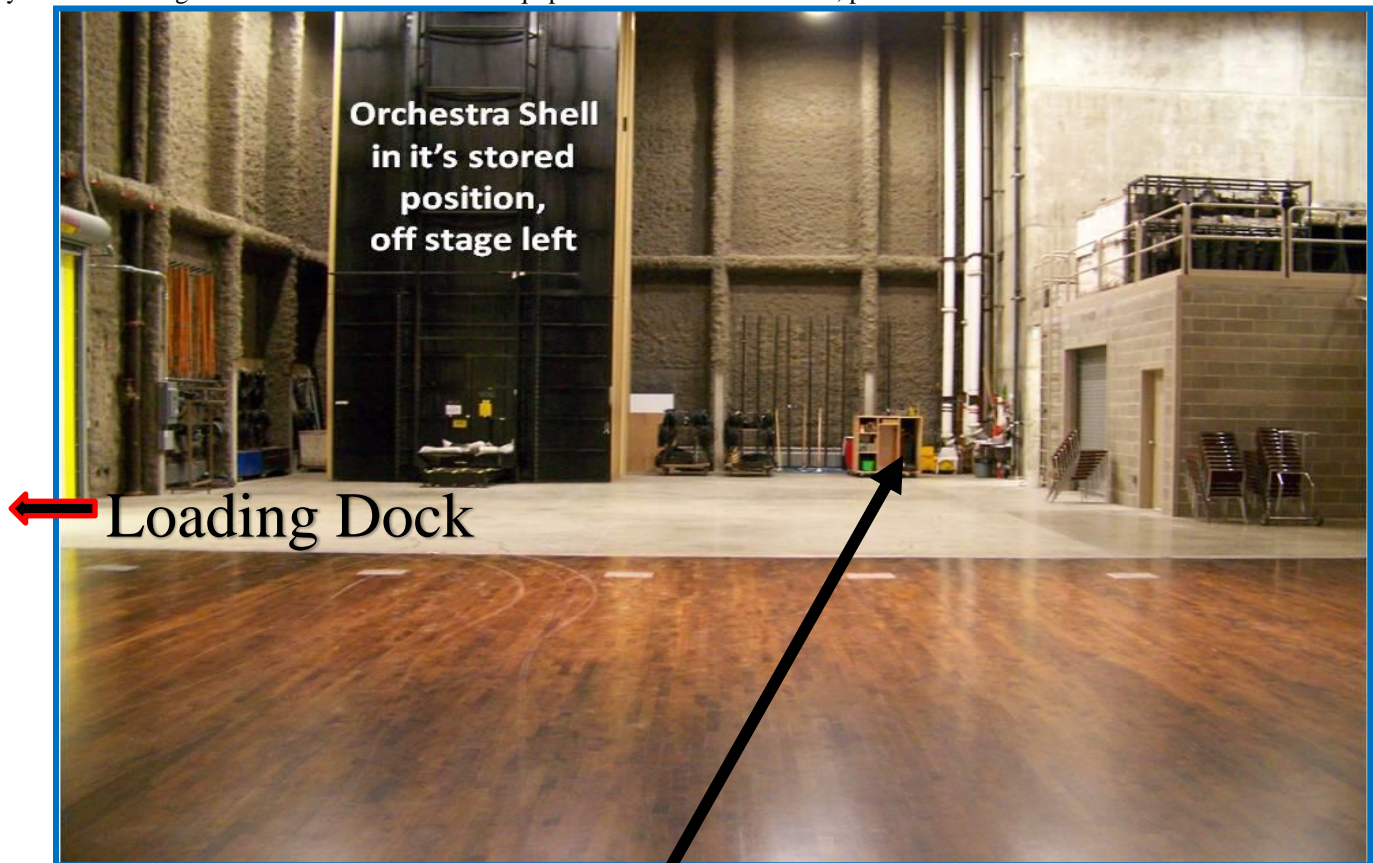




- 1 – Electric Forklift, 2800lb capacity, 48” forks. (Pictured above)
- 1 – Genie Single Man Lift, 36’ Max Platform Height, 300lb capacity.

Storage & Work Areas

There is a 24’ x 28’ enclosed staging area, pictured above, with a 13.5’ ceiling height just inside the loading dock that can be separated from the stage area with a roll up door if needed. This area can be used as storage, workshop etc. once move in is complete. Located off stage left is approximately a 36’ x 55’ area, pictured below, for scene storage, work area, etc. Height is limited by stage left pin rail platform at approx. 35’. Below the stage is a 66’ x 14’ instrument storage & musicians warm up area accessible only by the orchestra pit elevator or by a single door stairway next to the stage door entrance. Some house equipment is stored in this area, pictured below.



- Water
17” x 13” x 12” deep sink with hot & cold running water off stage left.



66' x 14' Instrument Storage & Musicians Warm Up Area Below the Stage



Access to the 2nd & 3rd Floors via Freight Elevator

Dressing Rooms, Green Room, & Laundry/Wardrobe Room

(All rooms located off stage right)

Main Floor, Stage Level

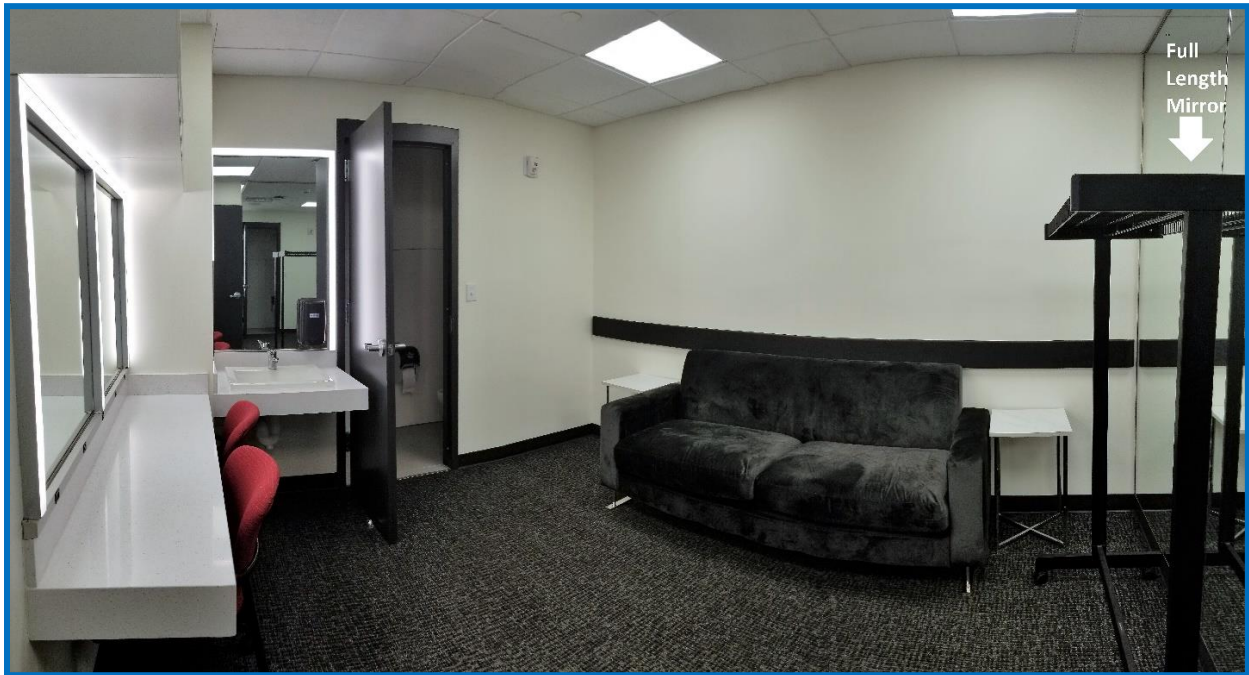
2 Identical Star dressing rooms, 1A & 1B, with sink, shower & toilet in the room

2, four person dressing rooms, 1C with sink, shower & toilet in room, 1D with sink, disabled access toilet in room, no shower.

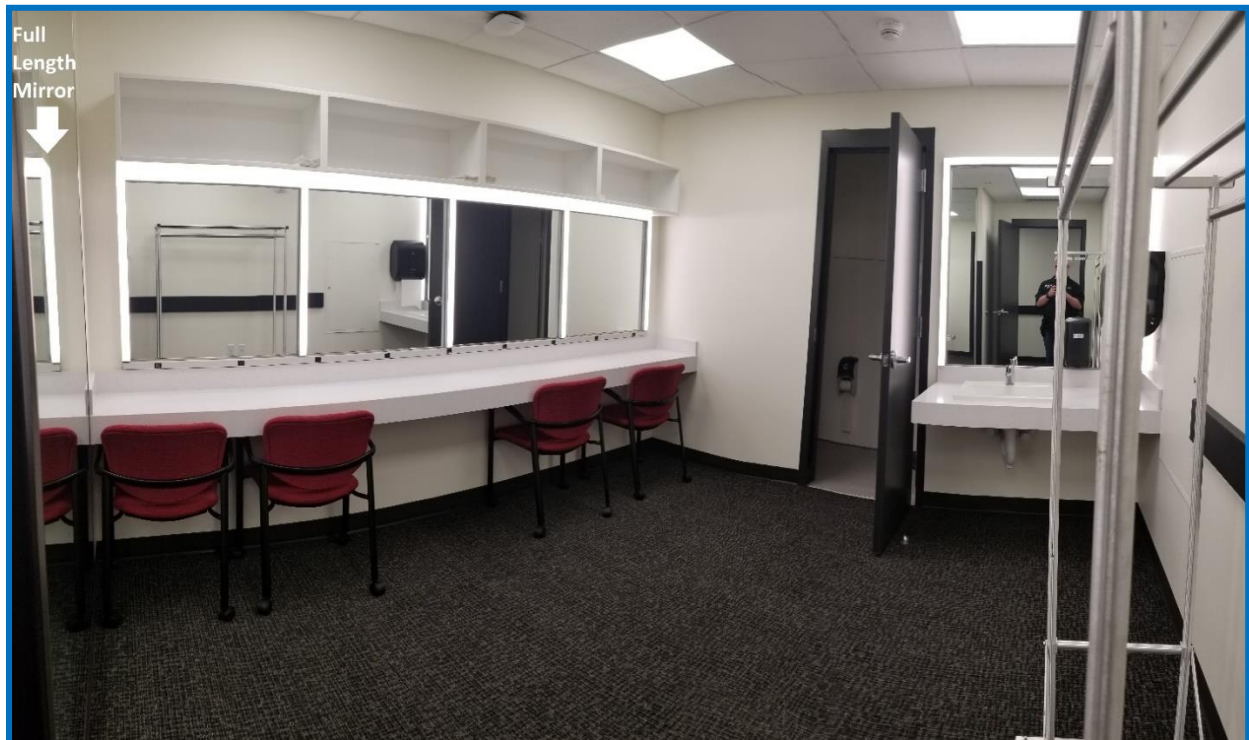
Green room with access to house, and to backstage. Usually used for production, stage managers, etc.

This floor also has 1 men's & 1 women's restroom, with no showers, at the end of the hallway.

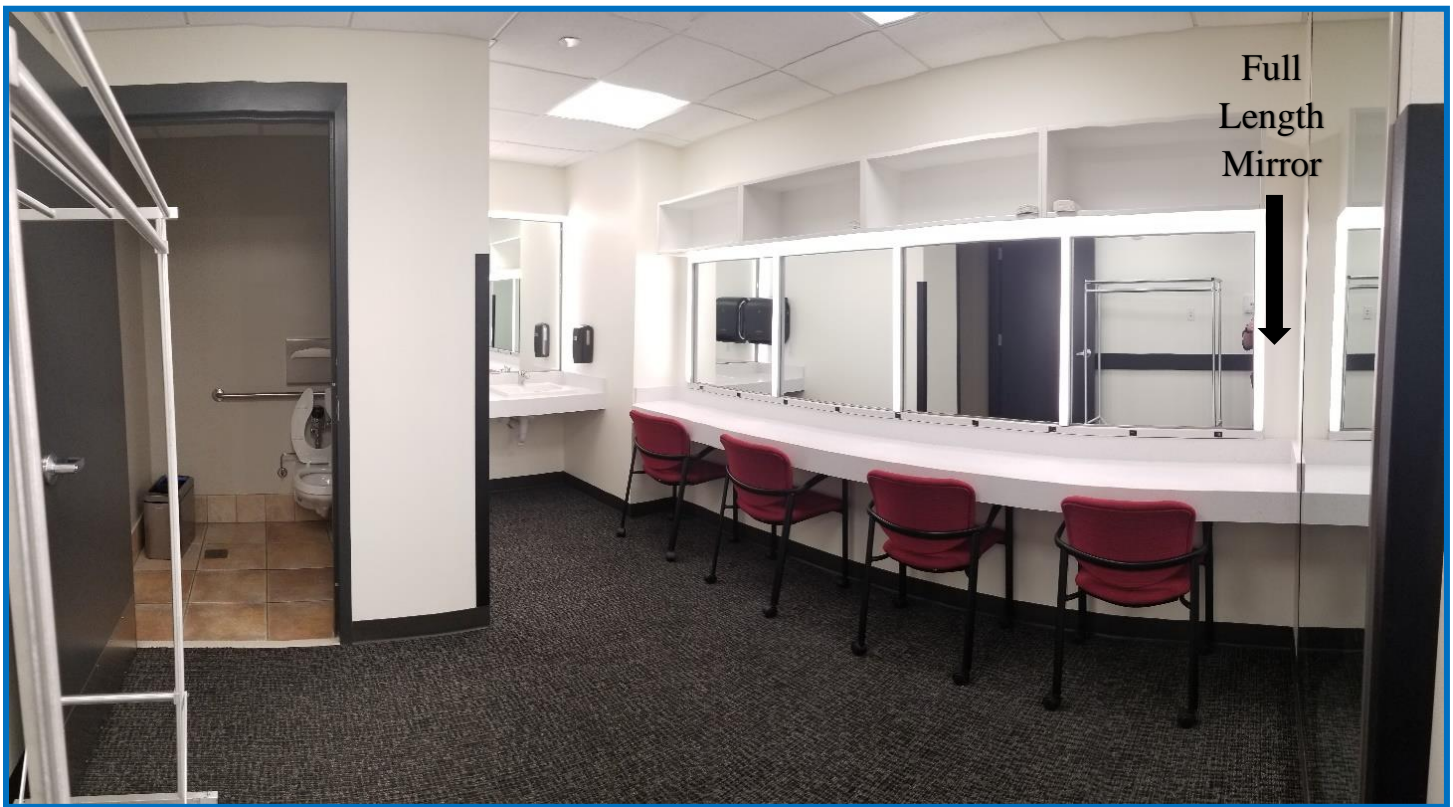
(See pictures below, some taken in panoramic mode so they may seem a little distorted)



Main Floor Dressing Rooms 1A & 1B – 10.5' x 12' (1–2 Person)



Main Floor Dressing Room 1C – 11' x 12' (4 Person)



Main Floor Dressing Room 1D – 11' x 15' (4 Person)



Main Floor Green Room / Production Office – 19' x 19'

Second Floor

2 - 7 person dressing rooms, (2E & 2F), & 1 - 12 person, (2G).

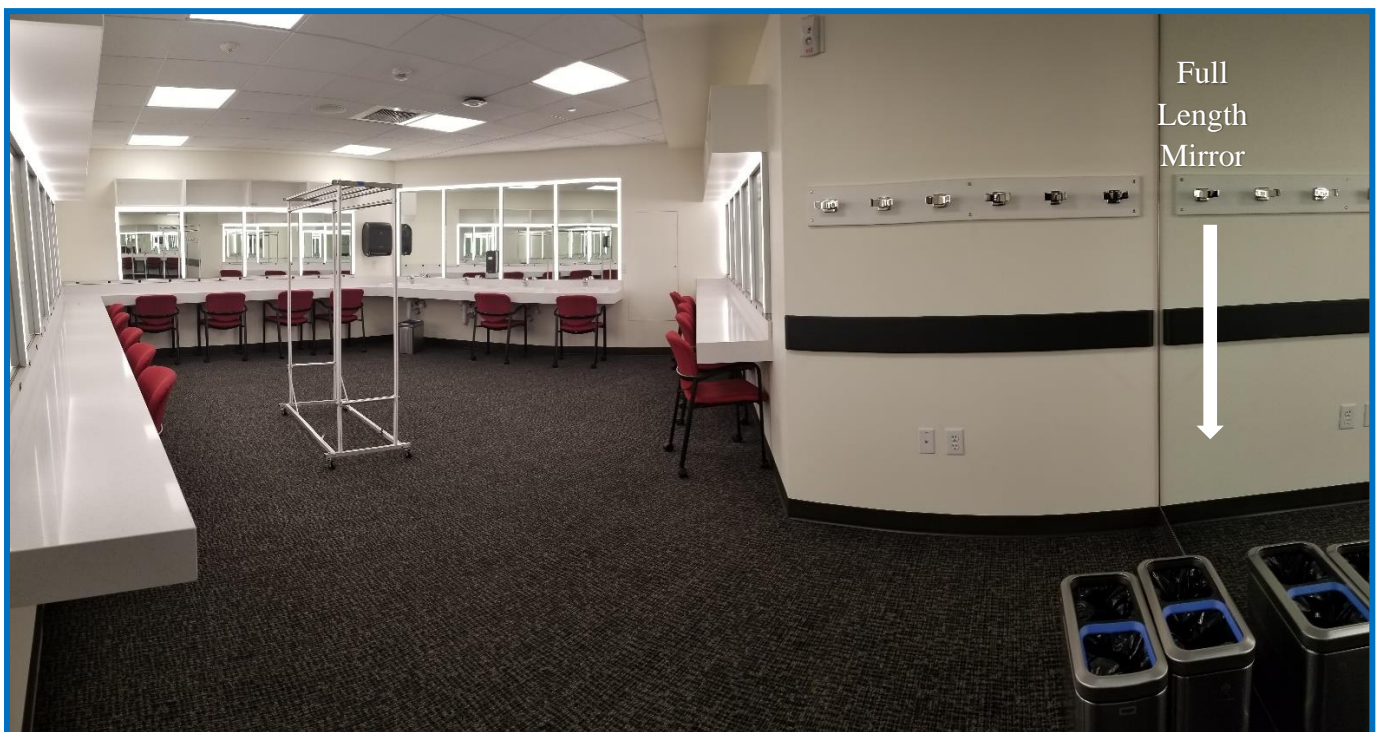
2 sinks in each room, no restrooms. (See Pictures Below)

1 men's & 1 women's restroom at the end of the hallway, each with sinks, mirrors & 2 showers.

1 - laundry/wardrobe room with 3 Speed Queen commercial duty washers & dryers, pictured below.



2nd Floor Dressing Rooms 2E & 2F – 10'6" x 19'6" (7 Person)



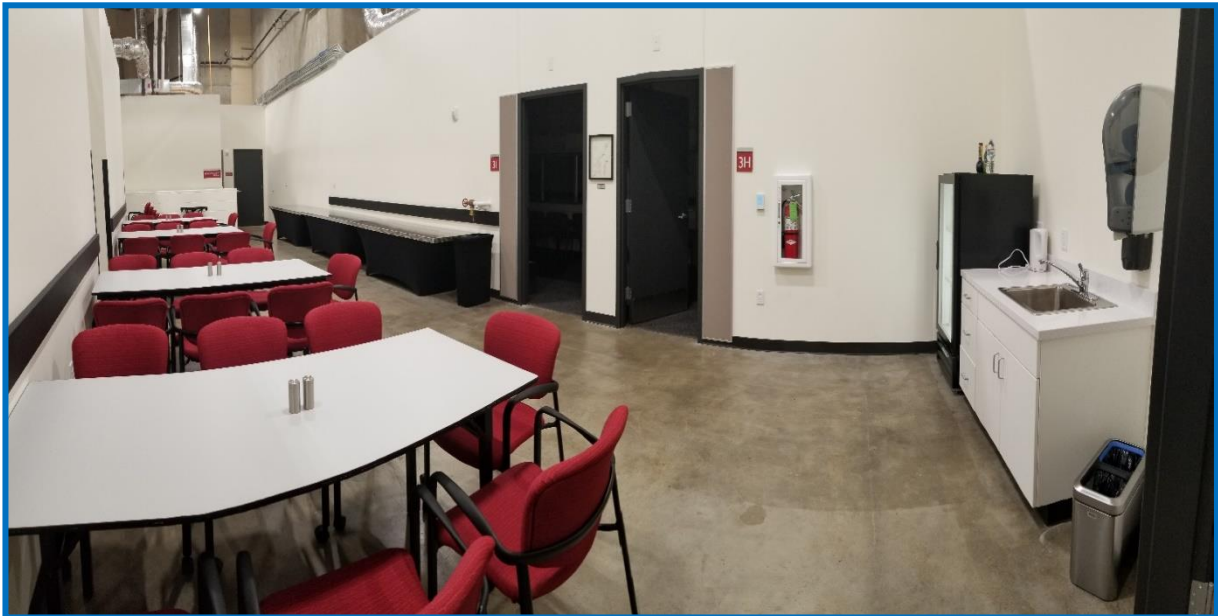
2nd Floor Dressing Room 2G – 26' x 22' (12 Person)



2nd Floor 16' x 20' Laundry / Wardrobe Room
STRICTLY FOR SHOW USE ONLY, NO PERSONNAL LOADS!

Third Floor

2 - 7 person dressing rooms, (3H & 3I), & 1 large, 4 person, (3J). 2 sinks in each room. (See Pictures Below)
 1 men's & 1 women's restroom, each with sinks, mirrors, no showers on this level.



This 40' x 15' open space gets used as a meal area for catering when needed, and the picture reflects the standard set up for that.



Dressing Rooms 3H & 3I – 9'6" x 19'6" (7 Person)



Dressing Room 3J – 18' x 20' (4 Person, with extra space)

Facility Internet Access

The First Interstate Center for the Arts can provide a 1 Gbps hard line internet connection to the production office prior to your arrival. This connection provides a DHCP address to your router, so please have the WAN port configured for DHCP addressing. Backstage Wireless access is also available, separate from our public Wi-Fi. The facility employs full-time IT staff that can be available as requested. **Charges may apply**

Merch & Lobby



Merch area is in the lobby at the top of the grand staircase and is accessible by elevator.

Load In: Through lobby doors. Elevator to 2nd level.

Size: 40' wide by 20' deep.

Merch Advance: Leslie Yost-Waits
Email: lyostwaits@spokanepfd.org
Cell: 509-939-6625

Merch Shipping Address:
First Interstate Center for the Arts
Attn: Tour Name Here
236 W Spokane Falls Blvd
Spokane, WA 99201

Orchestra Pit

Crescent shaped, approximately 60' wide by 15' deep @ center and 8' deep on each end. It is equipped with a hydraulic operated lifting platform which lifts from a low point of 10 feet below stage level to a high point, level with the stage. There are no stage traps or stage elevators. The orchestra pit has a capacity of 78 sellable seats that includes 2 for disabled seating. Orchestra Pit Floor to Stage Level is 41".



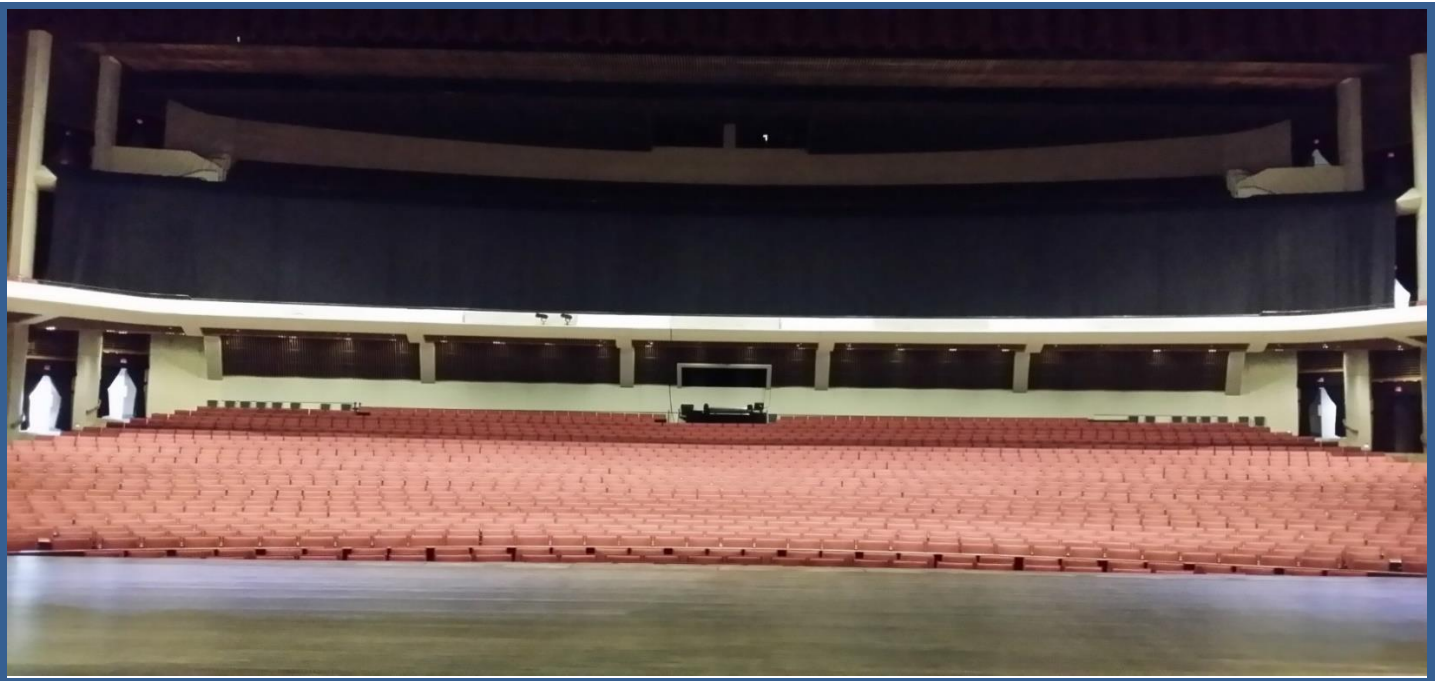
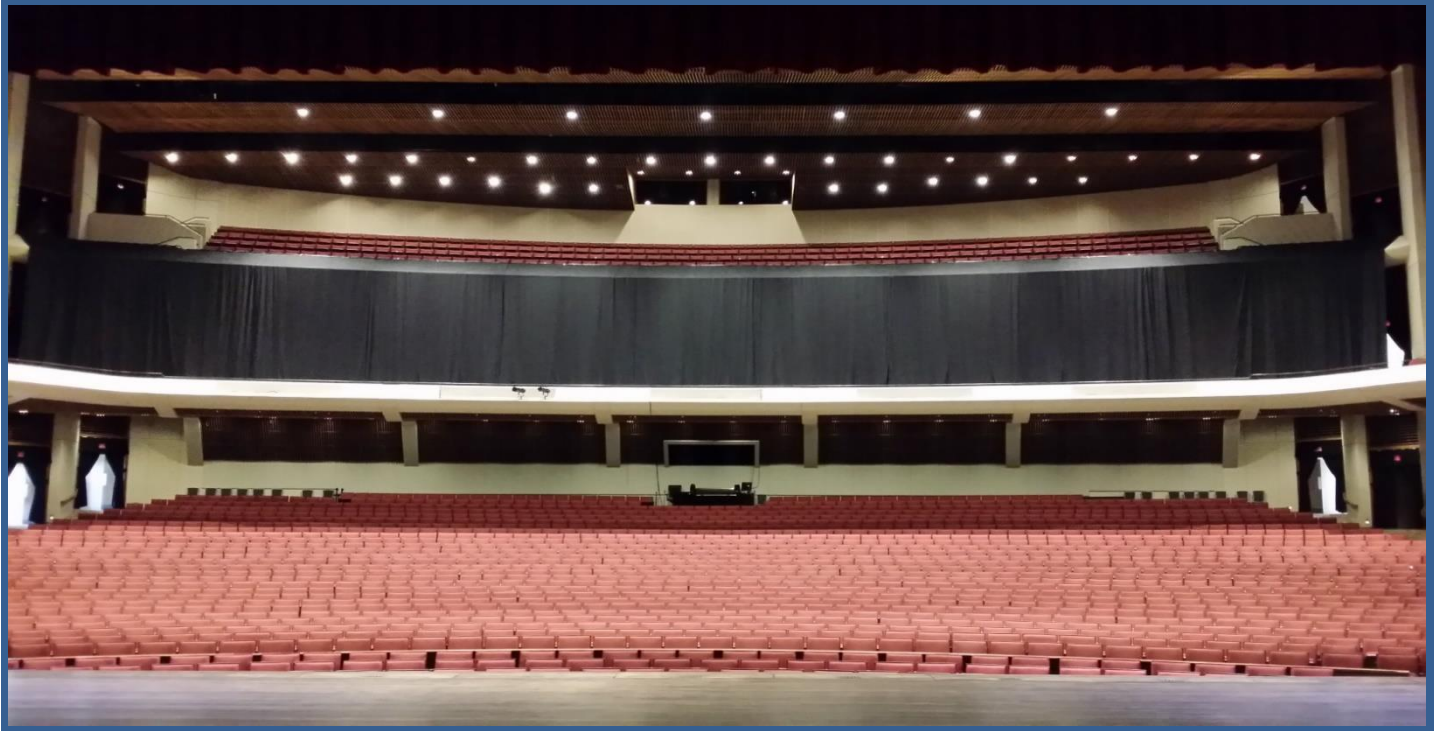
Orchestra Pit with the seats and Front Fill Speakers in Place.



Orchestra Pit with the seats taken out and no Front Fill Speakers.

Front of House Balcony Curtain

Want to turn our 2602 seat, 3 level Auditorium into a 1793 seat, single level Auditorium? Have our Balcony Curtain Installed. It hangs from the Balcony level handrail, down to the Terrace level floor. The pictures below show the curtain with all of the house lights on, and then with the upper-level house lights off. The Terrace and Balcony level seats practically disappear when the house lights are completely out!





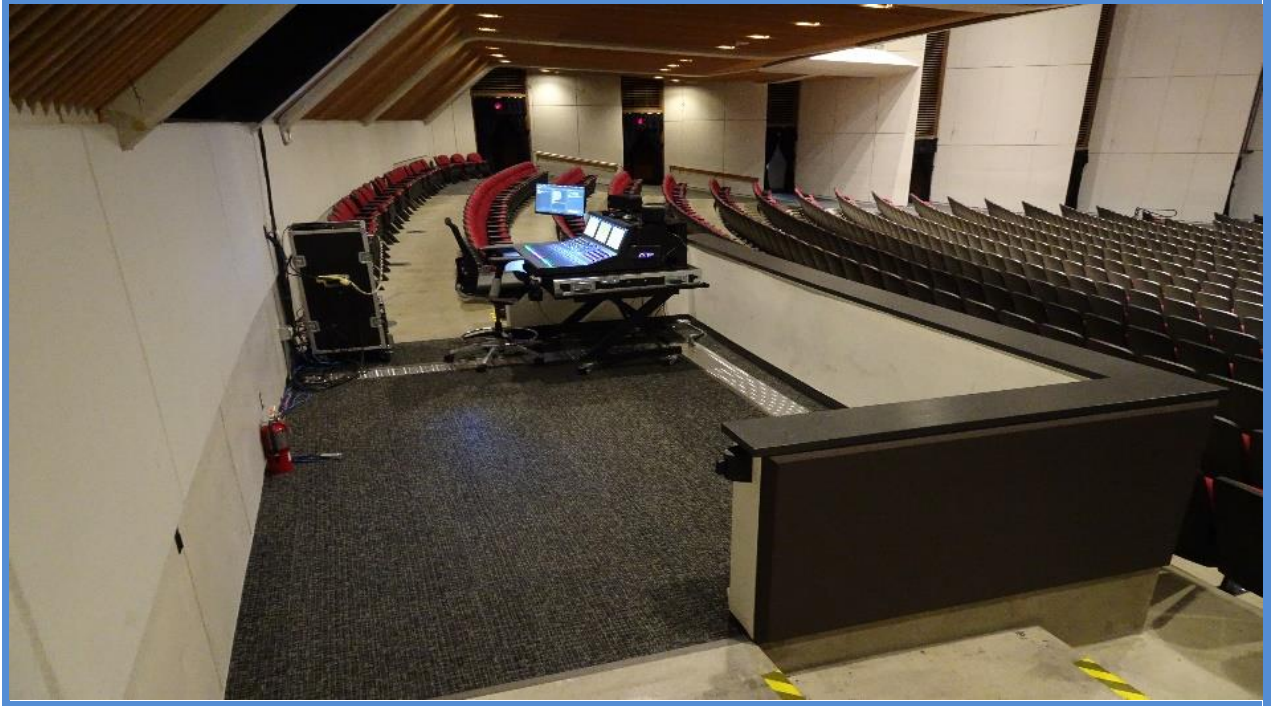
Facing the Stage from the Back of House



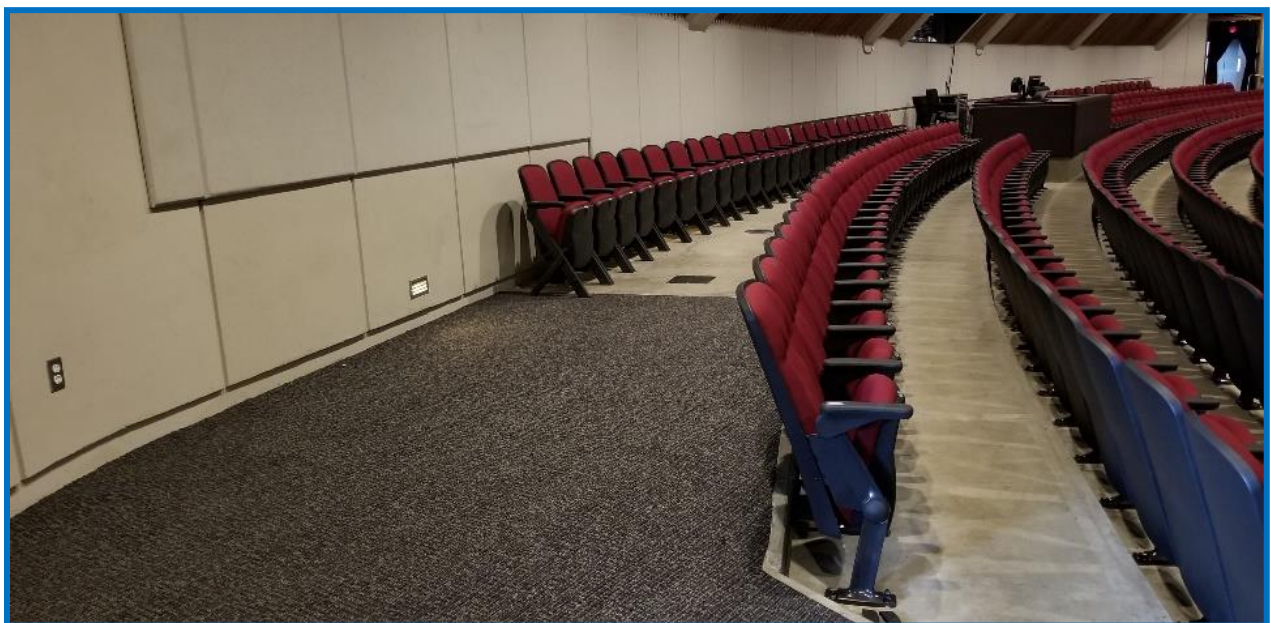
Facing the House from Up Stage Center

Front of House Mix Positions.

There are 2 main FOH positions, located at the rear of the house, orchestra level, all the way house right, and at center. The house right location is 16' wide x 7'6" deep. The center platform is 13'6" wide x 11'6" deep. Typical set up is sound at center, or house right, & lighting in the 15' wide x 10' deep lighting booth at the rear of the house. Stage DMX Lighting Control is available in the booth. Approx. 225' of snake needed to reach down stage from the house right location. The center mix position and booth runs take 300' of snake to reach down stage left and right. The house audio console lives at center and **cannot** be removed as it connects life safety systems and audio to several parts of the building. There is enough space for road show consoles and equipment, about 9' wide & 9' deep. (See pictures below).



Center Mix Position w/ House Audio Gear
(The House Audio Gear needs to stay in place but there is room for a console next to it).



House Right Mix Position

House Audio Equipment

(Charges may apply to use the systems).

Main Speaker Cluster (This system is always hung just above the proscenium).

The First Interstate Center for the Arts is equipped with a **Meyer Self Powered MSL-4 based system**. It is flown in a stereo configuration with each side consisting of 4 MSL-4's and 2 DF-4's, and 2 HP-700 Subwoofers are permanently rigged at center.

2 UPA-1P's & 4 MID's cabinets are used for front fill of the orchestra pit. This system is controlled by the Meyer Galileo Control System. The House mix position is out in the open, located in the back of the Orchestra Level. See picture below.

"Stacks & Racks" Available (This system is not permanently hung, and the use of it needs to be pre-arranged).

If you need more "horsepower" than the MSL-4 system, the facility also owns a **Meyer Leopard Line Array System** consisting of 18 Leopard Boxes and 3 - 1100-LFC Subs per side, and then 6 Lina boxes for front fills, all controlled by a Meyer Galaxy Processor.

FOH Audio Console

AVID VENUE S6L-24D. See picture below.



In House Monitor Rig

The in-house monitor desk is an AVID VENUE S6L-24D. **(Charges may apply)**
All our passive monitor cabinets are listed below and powered by QSC Amplifiers.

2 – Meyer USM-100P Self Powered
2 – Meyer UM-100P Self Powered
4 – Meyer MJF-210 Self Powered
9 – JBL SRX-712M
6 – EAW 1202's
2 – Meyer MSL4's for Side Fills

Microphone Selection

Shure SM 57 (15)	AKG C 1000 S (2)	Sennheiser e935 (4)
Shure Beta 57A (2)	AKG C 3000 B (2)	Sennheiser 421 (4)
Shure SM58 (12, 6 w/switch)	AKG 414-B-ULS (2)	Crown PCC-160 (5)
Shure Beta 58A (3)	AKG - C414-XLS (2)	Crown PX-18 PZM (2)
Shure Beta 52A (1)	AKG 451 EB w/CK1 capsules (9)	Neumann KM1 84 (2)
Shure Beta 98 (6)	AKG CK8 Shotgun Capsules (5)	Fostex M20RP Stereo Mic (1)
Shure SM 81 (4)	AKG CK9 Shotgun Capsules (6)	Crown SASS-P MK-II Stereo PZM (1)
Shure KSM 137 (2)	AKG SE5E-10 w/CE1 capsules (2)	Earthworks PM-40 Grand Piano Mic (1)
EV RE-20 (2)	Countryman E6 headset mics (2)	Barcus Barry 4000XL Piano Mic (1)
EV PC/12 lectern mic (2)	Countryman DT 85 Direct Box (3)	Radial Pro AV2 Direct Box (4)
Radial J48 Active Direct Box (2)	Radial JDI Passive Direct Box (3)	

4 - Shure UHF-R wireless mic systems with 4 – UR2 Handhelds with Standard SM58 capsules.
(Other Capsules available are; 2 Beta 58A, 2 Beta 87A, or 2 - KSM9)
4 - UR 1 body packs w/ WL184 Lavalier Mics, or 2 – WB98H/C Instrument Mics.

In House Pianos

7' Mason & Hamlin Model BB Grand Piano.
9' Baldwin Model D Grand (Available only in the Lounge).
Kawai UST-7 Upright Studio Spinnet.
Yamaha P-115B Digital Piano with 88 weighted keys.

Please call ahead for availability, rental, & tuning costs. Tuning of pianos must be done by a SPFD approved tuner.

Assistive Listening System

We use "Listen Everywhere" Wi-Fi system. Android devices with headphones are available as well as an app that can be run on a personal device.

House Electrical & Lighting Equipment.

Stage Power

3 – 400 amp 3 phase 5-wire 120\208 down stage right for lighting. Camlok or Lug tie in.
1 – 400 amp 3 phase 5-wire 120\208 down stage left for sound. Camlok or Lug tie in.
1 – 200 amp 3 phase 5-wire 120\208 up stage left. Camlok tie in.
1 – 200 amp 3 phase 5-wire 120\208 up stage right. Camlok tie in only with 4 – L21-30, thirty amp, 3 phase twist locks on the side.
1 – 100 amp 3 phase 5-wire 120\208 up stage right. Camlok tie in only with 2 – L21-20, twenty amp, 3 phase twist locks on the side.

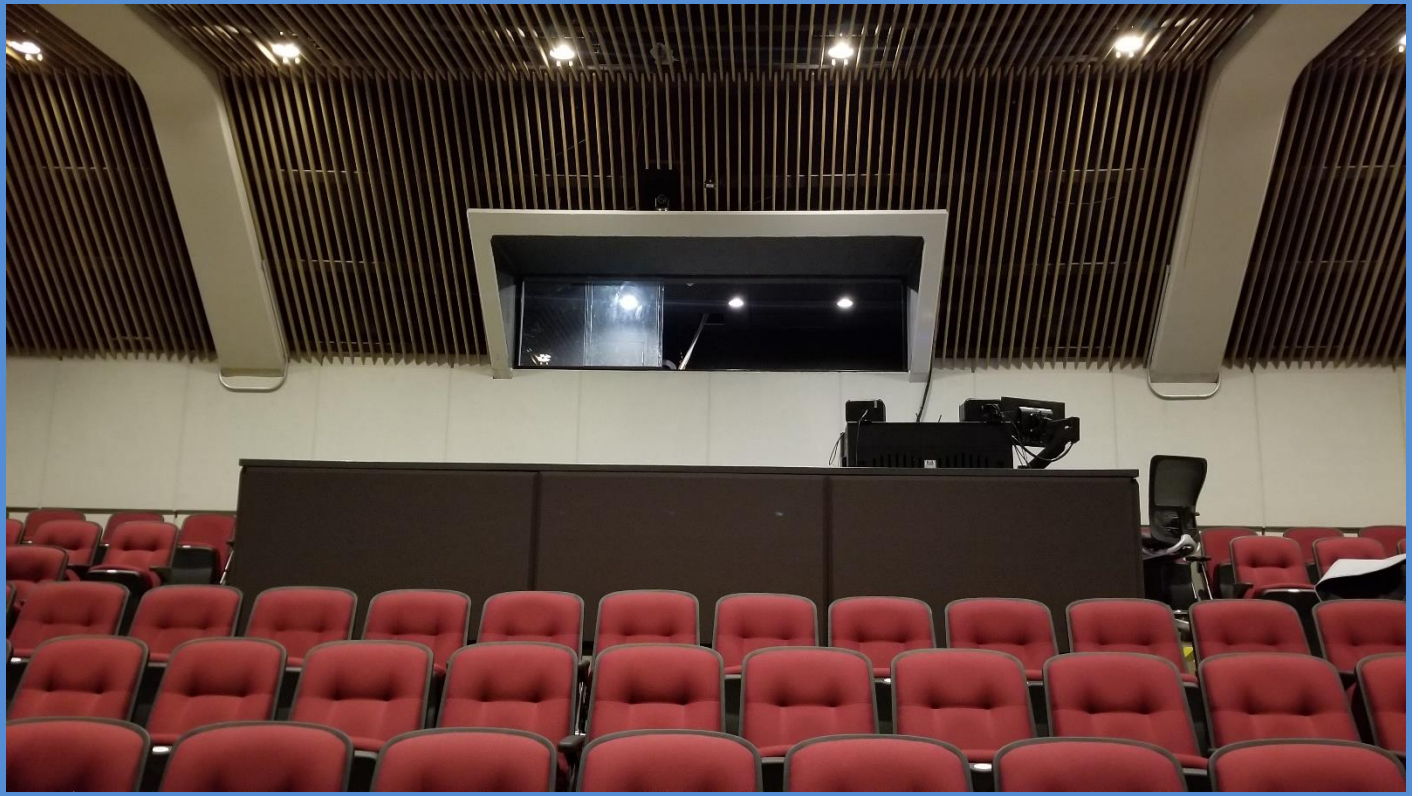
Lighting Control System

ETC Sensor Dimming Racks, 384 channels, all 20 amp circuits. 2 ETC ION Lighting Consoles.

Lighting control can be from the FOH lighting booth or off stage right. DMX connections in booth so system can be accessed by road gear if needed.

FOH Lighting Booth

This booth is 15'w x 10'd and is located behind the orchestra level seating at center and is raised above the seats. This is the preferred location for road show lighting since no seat kills are needed. It's a distance of 117' 6" from the front edge of the stage, has a sliding glass window (10'6"w x 3' h) and is equipped with a sink & toilet.



Front of House Lighting

1st Catwalk, 12 circuits, catwalk is just above and down stage of the proscenium, 32ft. from down stage center.

2nd Catwalk, 24 circuits, currently all circuited with Berkey 10 degrees, 57ft. from down stage center.

3rd Catwalk, 28 circuits, currently circuited with 18 ETC Color Source Spots & 10, 750W Source 4's, all with 10 degree lenses, 70ft. from down stage center. **This catwalk has 4 rigging points, 2 – 12'4" off center, & 2 – 26'8" off center.**

1st Balcony, 16 circuits, plus 1 non-dim circuit, 95ft. from down stage center.

2nd Balcony, 8 circuits, plus 1 non-dim circuit, 110ft. from down stage center.

Box Booms, Left & Right, 9 circuits on each side, 86ft. from down stage center.

Stage Lighting

1st Electric. 30 circuits.

2nd, 3rd, 4th, & 5th Electrics. 24 circuits each.

Floor Pockets. 5 floor pockets stage right, 5 floor pockets stage left, & 8 floor pockets upstage. Each with 3 circuits and 1 non-dim.

Fixture Inventory

12 - Chauvet Maverick MK-1 Movers with Hanging Hardware

8 – Martin Mac Vipers

8 - ETC Color Source Cyc Lights with Floor & Hanging Hardware

15 – ETC Selador Vivid-R LED Fixtures with Floor & Hanging Hardware

24 - Source Four 19'

6 – Altman 6 x 16

24 – Source Four 26'

36 – Altman 6 x 9

24 – Source Four 36'

16 – Altman 6 x 12

6 – Source Four 50'

6 – Berkey 10'

60 – Par 64 MFL

60 – ETC Source 4 Pars

60 – 8" Fresnel

10 – Elation EPAR QA

2 – Mole Audience Lts

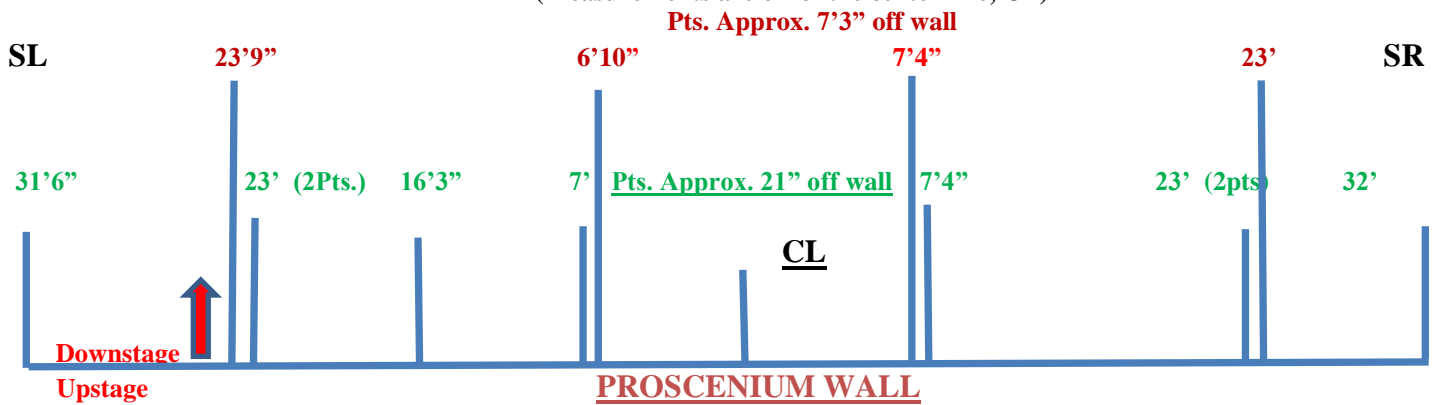
8 – Berkey Zoom 6 x 16

House Spotlights & Spotlight Booth

3 - Lycian model #1295 - 3k and, 1- Lycian model #1290 - 2k. Located behind the 2nd balcony wall at center, a distance of approximately 125' from the front edge of the stage. Approximate size is 13' x 25' and it's enclosed (**Charges may apply**).

Downstage of the Proscenium Wall Rigging Points

(Measurements are off of the center line, CL)



Stage dimensions and measurements.

Maple Hardwood Floor, 93'W x 51'D. Max drill depth is 2".

Proscenium: Max opening 66' 0" wide x 26' 6" high.

Stage height from Orchestra Pit floor to stage floor, in seated position, 41".

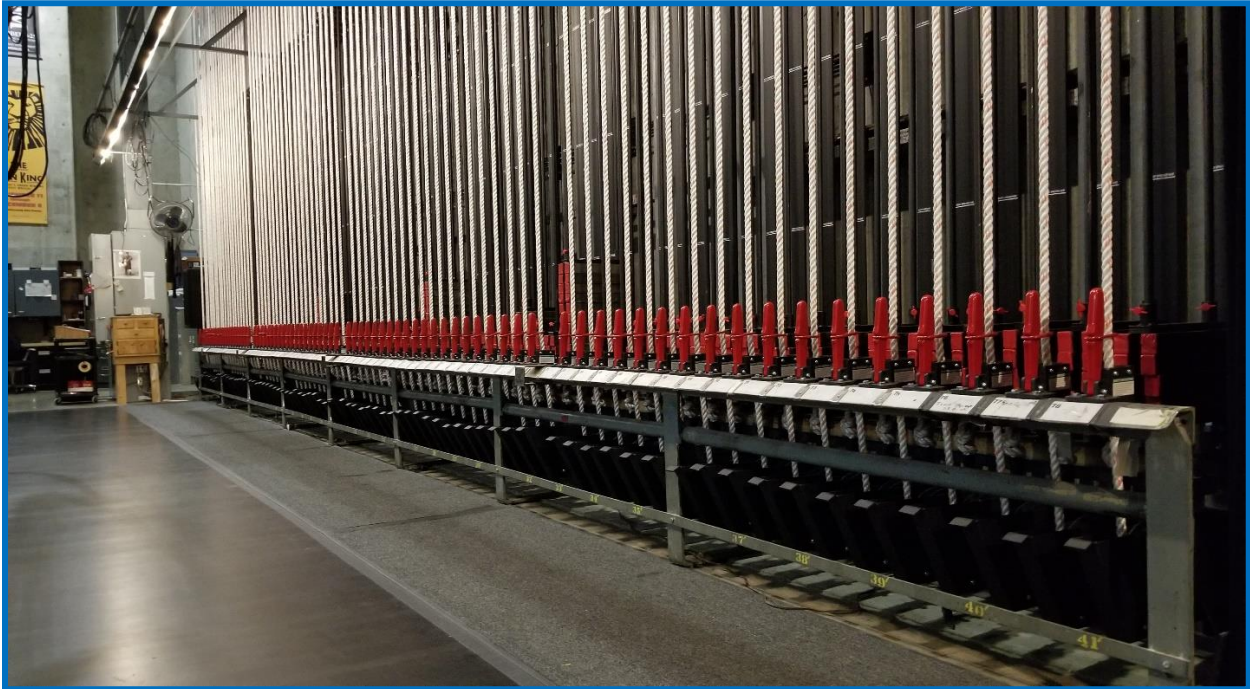
Orchestra Pit back wall height, 32".

Curtain control and working fly floor located stage right, single purchase.

DISTANCES FROM –

Edge of apron to orchestra and balcony level back wall -	117' – 6"
Edge of apron to upstage back wall -	59' – 4"
Balcony rail to proscenium -	99' – 0"
Proscenium wall to upstage back wall -	54' – 4"
Proscenium wall to upstage crossover bridge -	50' – 0"
House curtain to upstage back wall -	52' – 0"
House curtain to upstage crossover bridge -	47' – 8"
Apron to Fire Curtain (Smoke Pocket is 1ft. deep)	5' - 0"
Apron to House curtain -	7' – 4"
Apron to house curtain with the pit raised –	23' – 4"
Center stage to stage right wall -	55' – 3"
Center stage to stage left wall –	94' – 3"
Center Stage to auxiliary pin rail platform, stage right -	47' – 9"
Center Stage to auxiliary pin rail platform, stage left -	51' – 0"
Floor height of stage right & left pin rail platforms from stage floor -	37' – 4"
Clearance of stage right & left pin rail platforms -	34' – 11"
Bottom of 1 st catwalk to stage floor. Catwalk is just above and down stage of the proscenium.	31' – 2"
Floor height of upstage crossover bridge from stage floor -	37' – 4"
Clearance of upstage crossover bridge -	34' – 8"
Counterweight locking rail located on stage floor & extending from stage right wall -	3' – 3"
Floor height of counterweight loading bridges from stage floor –	
Lower bridge -	62' – 6"
Upper bridge -	70" – 6"
Clearance of lower counterweight loading bridge -	61' – 10"
Distance between the stage left & right pin rail platforms -	93' – 6"
Height to top of grid -	75' – 8"
Clearance of grid -	74' – 6"
Flying clearance -	74' – 0"

FIRST INTERSTATE CENTER FOR THE ARTS
COUNTERWEIGHT ARBOR INFO AND HANGING PLOT



Single Purchase Fly Rail System Stage Right

Grid Flying Clearance Height of 74'. **Fire curtain and smoke pocket must be observed.**
Fire curtain starts 5ft. upstage from the downstage edge, apron. The smoke pocket is 1ft. deep.

Single purchase counterweight locking rail located on stage floor & extending from stage right wall - 3' – 3"

Floor height of counterweight loading bridges from stage floor –

Lower bridge - 62' – 6"

Upper bridge – 70' – 6"

Clearance of lower counterweight loading bridge - 61' – 10"

House Goods.

Crimson main drape.

5 sets of 30' x 30' flat black legs plus black borders with 50% fullness.

All black legs are 30'x 30' flat panels.

4 – 30' x 30' flat crimson panels for guillotine curtain.

80' Blackout upstage.

6 – 10' Black side tabs.

80' x 30' Sky Cyc.

70' x 30' Black Scrim.

70' x 30' White Scrim.

23' x 50' Rear screen projection surface. (Flyable only, no ground support)

24' x 24' Front projection roll screen. (Flyable only, no ground support)

COUNTERWEIGHT ARBOR HANGING PLOT

Complete System Rebuild by Stagecraft Summer of 2020

Battens are 1-1/2" SCH 40 Pipe - Length of the pipe battens is 63'.

The 5 electric sets have 12" ladder truss that are 63' long.

All line sets, except the electrics, have the capability to be extended to 72'.

Lineset	From PL	House Hang	Arbor Capacity	# Lines	Batten Length	Notes
1	1'5"	Crimson Border	1500 lb.	7	63'	
FLYRAIL STRUCTURAL SUPPORT						
2	2'1"	Crimson Legs	1500 lb.	9	85'	
3	2'5"		1500 lb.	7	63'	
4	2'11"	Crimson Guillotine	1500 lb.	7	63'	
5	3'5"		1500 lb.	7	63'	
6	3'11"		1500 lb.	7	63'	
7	4'5"	1st Electric	1500 lb.	7	63' - 12" Ladder Truss	(30) - 20 Amp Circuits
8	4'11"		1500 lb.	7	63'	
9	5'5"		1500 lb.	7	63'	
10	5'11"		1500 lb.	7	63'	
11	6'5"		2404 lb.	7	63'	13' Arbor
12	6'11"		1500 lb.	7	63'	
13	7'5"		1500 lb.	7	63'	
14	7'11"		1500 lb.	7	63'	
15	8'5"		1500 lb.	9	85'	
16	8'11"	Black Border	1500 lb.	7	63'	
17	9'5"	Black Legs	1500 lb.	9	85'	
18	9'11"		1500 lb.	7	63'	
19	10'5"		1500 lb.	7	63'	
20	10'11"		1500 lb.	7	63'	
21	11'5"	2nd Electric	1500 lb.	7	63' - 12" Ladder Truss	(24) - 20 Amp Circuits
FLYRAIL STRUCTURAL SUPPORT						
22	12'5"		1500 lb.	7	63'	
23	12'11"		1500 lb.	7	63'	
24	13'5"		1500 lb.	7	63'	
25	13'11"		2404 lb.	7	63'	13' Arbor
26	14'5"		1500 lb.	7	63'	
27	14'11"		1500 lb.	7	63'	
28	15'5"	#2 Black Border	1500 lb.	7	63'	Batten Extended to 72'
29	15'11"	#2 Black Legs	1500 lb.	9	85'	
30	16'5"		1500 lb.	7	63'	
31	16'11"		1500 lb.	7	63'	
32	17'5"		1500 lb.	7	63'	
33	17'11"	3rd Electric	1500 lb.	7	63' - 12" Ladder Truss	(24) - 20 Amp Circuits
34	18'5"		1500 lb.	7	63'	
35	18'11"		1500 lb.	7	63'	
36	19'5"		1500 lb.	7	63'	
37	19'11"		1500 lb.	7	63'	
38	20'5"		1500 lb.	7	63'	
39	20'11"		2221 lb.	7	63'	12' Arbor
40	21'5"		1500 lb.	9	63'	

41	21'11"		1500 lb.	7	63'	
FLYRAIL STRUCTURAL SUPPORT						
42	22'11"	#3 Black Border	1500 lb.	7	63'	Batten Extended to 72'
43	23'5"	#3 Black Legs	1500 lb.	9	85'	
44	23'11"		1500 lb.	7	63'	
45	24'5"		1500 lb.	7	63'	
46	24'11"		1500 lb.	7	63'	
47	25'5"		1500 lb.	7	63'	
48	25'11"		1500 lb.	7	63'	
49	26'5"	4th Electric	1500 lb.	7	63' - 12" Ladder Truss	(24) - 20 Amp Circuits
50	26'11"		1500 lb.	7	63'	
51	27'5"		1500 lb.	7	63'	
52	27'11"		2221 lb.	7	63'	12' Arbor
53	28'5"		1500 lb.	7	63'	
54	28'11"		1500 lb.	7	63'	
55	29'5"		1500 lb.	7	63'	
56	29'11"		1500 lb.	7	63'	
57	30'5"	#4 Black Border	1500 lb.	7	63'	Batten Extended to 72'
58	30'11"	#4 Black Legs	1500 lb.	9	63'	
59	31'5"		1500 lb.	7	63'	
60	31'11"		1500 lb.	7	63'	
61	32'5"	5th Electric	1500 lb.	7	63' - 12" Ladder Truss	(24) - 20 Amp Circuits
62	32'11"		1500 lb.	7	63'	
FLYRAIL STRUCTURAL SUPPORT						
63	33'11"		1500 lb.	7	63'	
64	34'5"		1500 lb.	7	63'	
65	34'11"		1500 lb.	7	63'	
66	35'5"		1500 lb.	7	63'	
67	35'11"		1500 lb.	7	63'	
68	36'5"		1500 lb.	7	63'	
69	36'11"		1500 lb.	7	63'	
70	37'5"		1500 lb.	7	63'	
71	37'11"		1500 lb.	7	63'	
72	38'5"	Black Border	1500 lb.	7	63'	Stored (Placement as Needed)
73	38'11"	Black Backdrop	1500 lb.	7	63'	Stored (Placement as Needed)
74	39'5"		1500 lb.	7	63'	
75	39'11"	Rear Projection Screen	1500 lb.	7	63'	Stored (Placement as Needed)
76	40'5"		1500 lb.	7	63'	
77	40'11"	Black Backdrop	1500 lb.	7	63'	
78	41'5"	Roll Screen	1500 lb.	7	63'	Stored (Placement as Needed)

Pyrotechnics Procedures Information

Washington State law requires that a Washington State Licensed Pyro technician be present and supervise any proximate (indoor) displays. We work with a Washington State Licensed Pyro technician, who is able to secure the various permits on your behalf. Contact S.P.F.D. Production Manager Erik Young to get this procedure started, 509-869-1892 or eyoung@spokanepfd.org.

The information below is required prior to applying for the various permits.

You will need to supply a packet of information which describes what effects will take place, where on the stage they take place, and when during the show they take place. The packet must include certification of flame proofing of any soft goods that the pyrotechnics effects may come in contact with, as well as the MSDS sheets for each compound or component used.

The Pyro technician, the Promoter, the Spokane Public Facilities District, and The City of Spokane must be listed as a 'named insured' with your insurance company and a copy of that document must be provided with your information packet.

We will provide a separate, lockable area for storing your portable magazine.
This area may also be used to prepare your pyrotechnics effects.

25

Choral Risers

We Have 12, StageRight FR-36, three or four step risers with back rails. **(Charges may apply)**

