



First Interstate Center for the Arts
334 West Spokane Falls Blvd.
Spokane, WA 99201
(509)279-7000
(509)279-7060 fax
www.inbpac.com
www.spokanepfd.org

FIRST INTERSTATE CENTER FOR THE ARTS TECHNICAL INFO PACKET

V 1.2
5/1/2019



The Facility

The First Interstate Center for the Arts was built in 1974 for the World's Fair, Expo '74. It is a multi-purpose auditorium with 2602 seats, continental style, on 3 levels. The seating capacities are: 1715 on the orchestra level, 469 on the terrace level, 340 on the balcony level, and 78 within the orchestra pit when seated.

The Facility is owned and operated by the Spokane Public Facilities District.

720 West Mallon Ave.

Spokane, WA 99201

www.spokanepfd.org

(509)279-7000 (509)279-7050 fax.

Mission Statement

The Spokane Public Facilities District's mission is to operate the finest public assembly facilities and provide the highest quality of Guest Services in a manner that ensures profitable operations and financial sustainability, returns value to the stakeholders, and maximizes economic impact to the Inland Northwest.

CONTACT LIST

Spokane Public Facilities District Staff

Booking and House Manager

Matt Meyer, (509)279-7046 mmeyer@spokanepfd.org

Director of Event Operations

Mike Gaffaney, (509)279-7049 mgaffaney@spokanepfd.org

Director of Sales & Marketing

Jessica Deri, (509)279-7118 jderi@spokanepfd.org

Technical and Audio Visual Services

Mike Tucker, Technical Services Manager (509)279-7171 mtucker@spokanepfd.org

Building Vendor Contact List

Stagehands / I.A.T.S.E. Local #93

Business Agent, Jaye Nordling (509)714-9418 ajnordling@aol.com

Call Steward, Pat Devereaux (509)999-5073 patdevereaux@aol.com

Catering, Concessions & Food Service

Centerplate (509)279-7395

Sable Edwards, (509)279-7403 sedwards@spokanepfd.org

Security / Crowd Management

Contemporary Services Corporation www.csc-usa.com

Ava Jones, Senior Event Manager (509)473-0396 ava.jones@csc-usa.com

Box Office / Ticketing

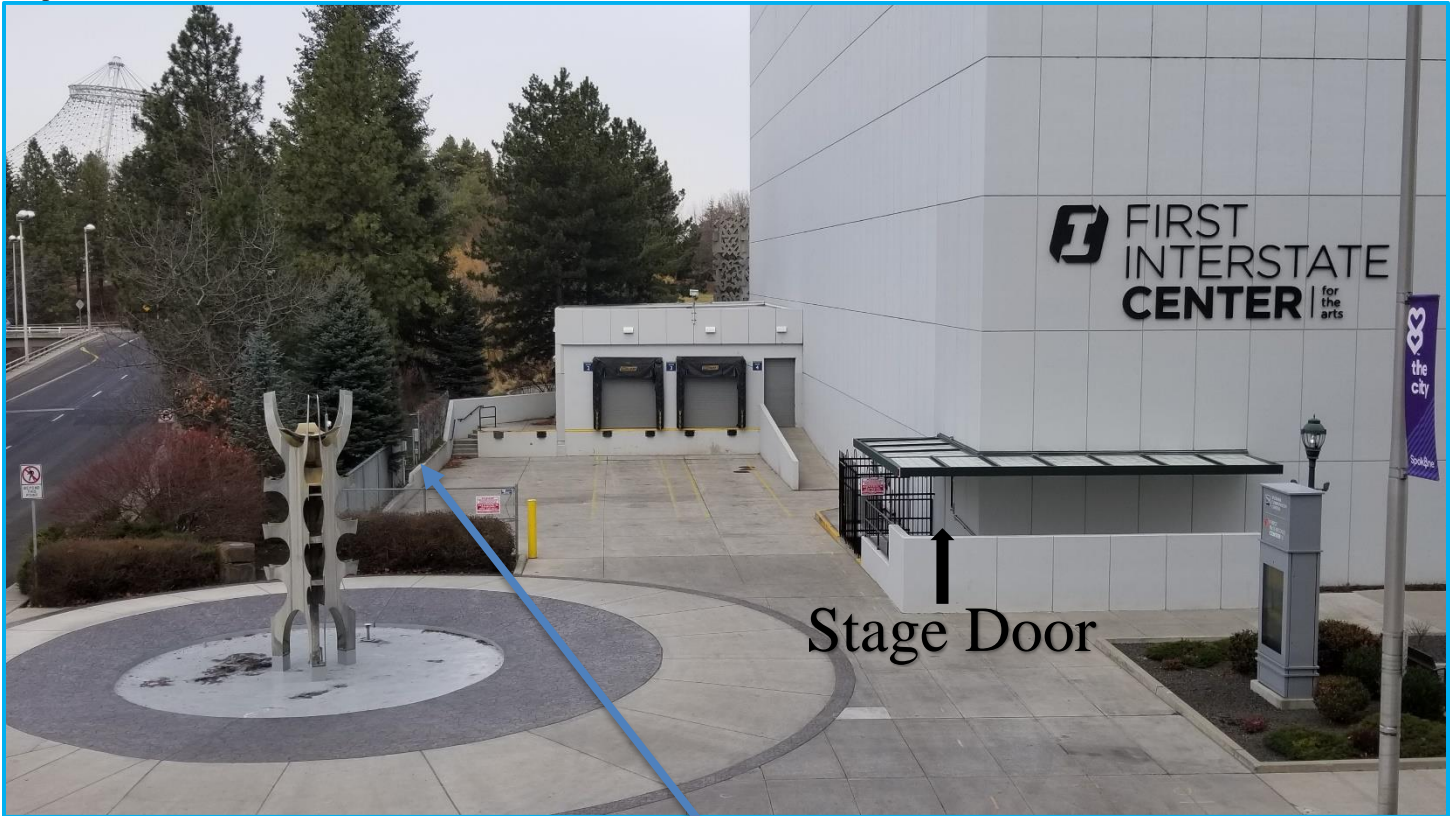
TicketsWest 1-800-325-SEAT www.ticketswest.com

Denys Hammonds, Box Office Manager (509)279-7452 denys.hammonds@ticketswest.com

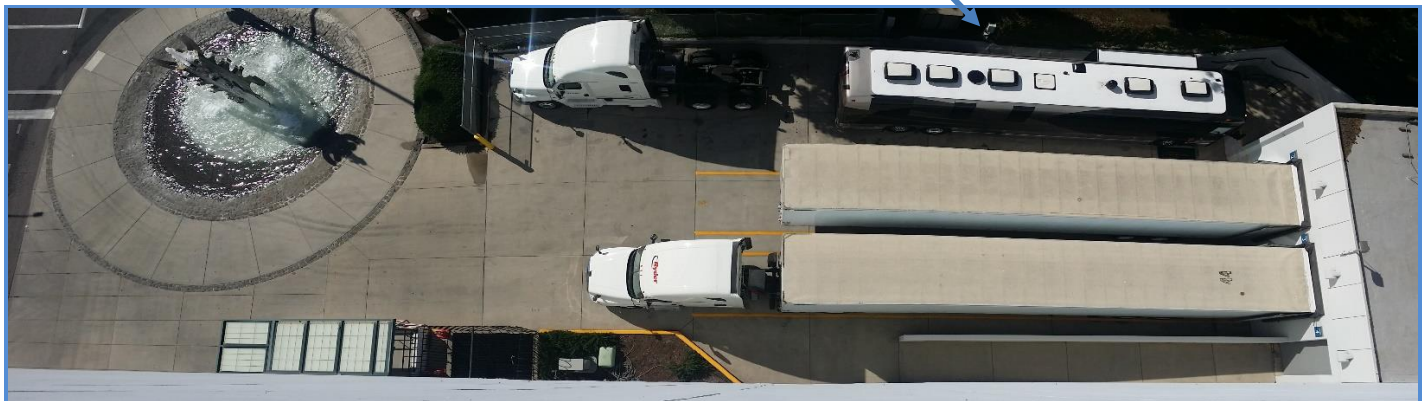
Loading Dock

The 3 truck loading dock located at the rear of the First Interstate Center for the Arts, on the NE corner of Spokane Falls Blvd. and Washington St., enables you to unload and load into the staging area located upstage left. The loading dock height is 46", and is at the same level as the stage.

Shore Power – 2 disconnect boxes, each with 1 standard 20 amp GFCI outlet, 1 - 30 amp TT-30R, & 1 - 50 amp 14-50R connections, see pictures below.



(Shore Power Location x 2)



BACKSTAGE FACILITIES

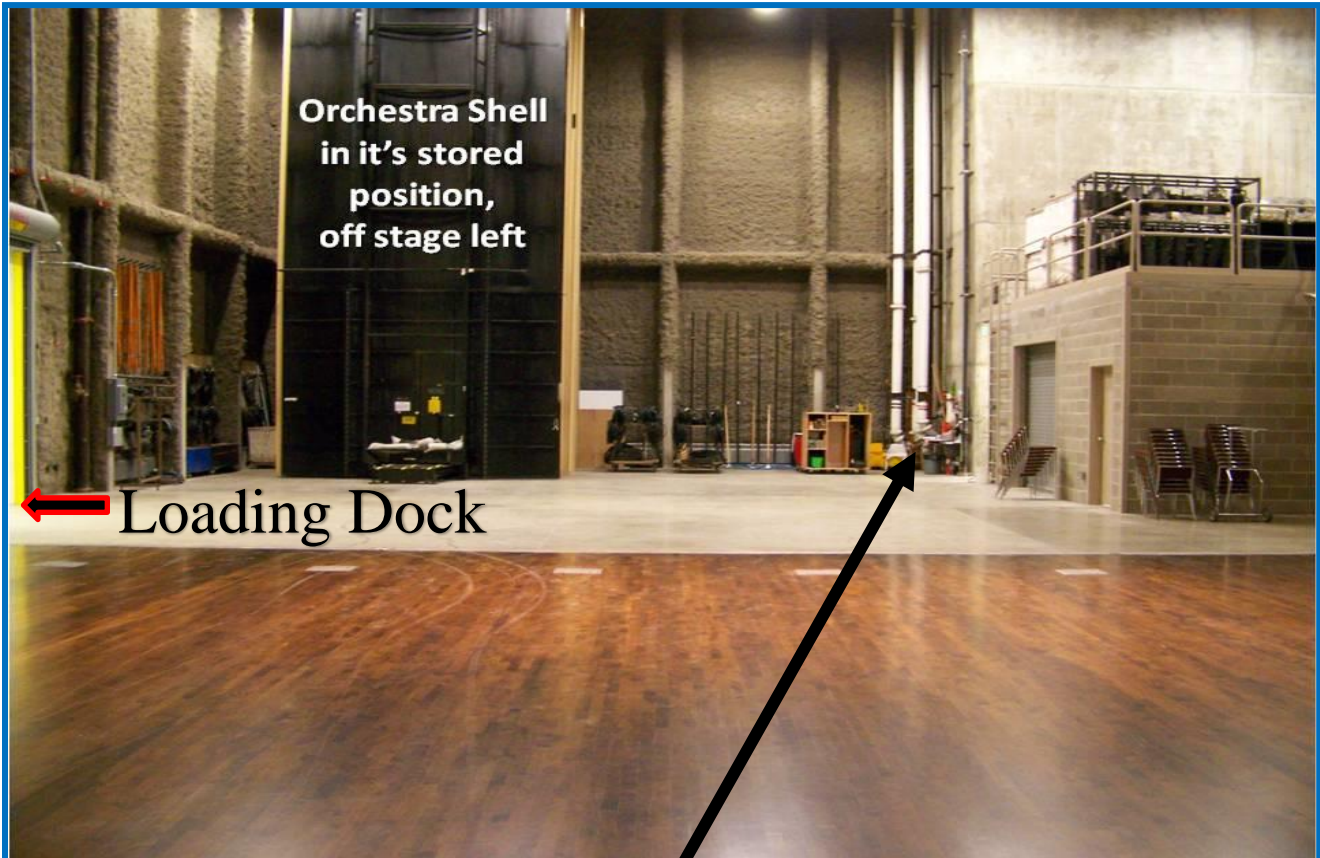
Forklifts / Man lifts



- 1 – Electric Forklift, 2800lb capacity, 48” forks. (Pictured above)
- 1 – Genie Single Man Lift, 36’ Max Platform Height, 300lb capacity.

Storage & Work Areas

There is a 24’ x 28’ enclosed staging area, pictured above, with a 13.5’ ceiling height just inside the loading dock that can be separated from the stage area with a roll up door if needed. This area can be used as storage, workshop etc. once move in is complete. Located off stage left is approximately a 36’ x 55’ area, pictured below, for scene storage, work area, etc. Height is limited by stage left pin rail platform at approx. 35’. Below the stage is a 66’ x 14’ instrument storage & musicians warm up area accessible only by the orchestra pit elevator or by a single door stairway next to the stage door entrance. Some house equipment is stored in this area, pictured below.

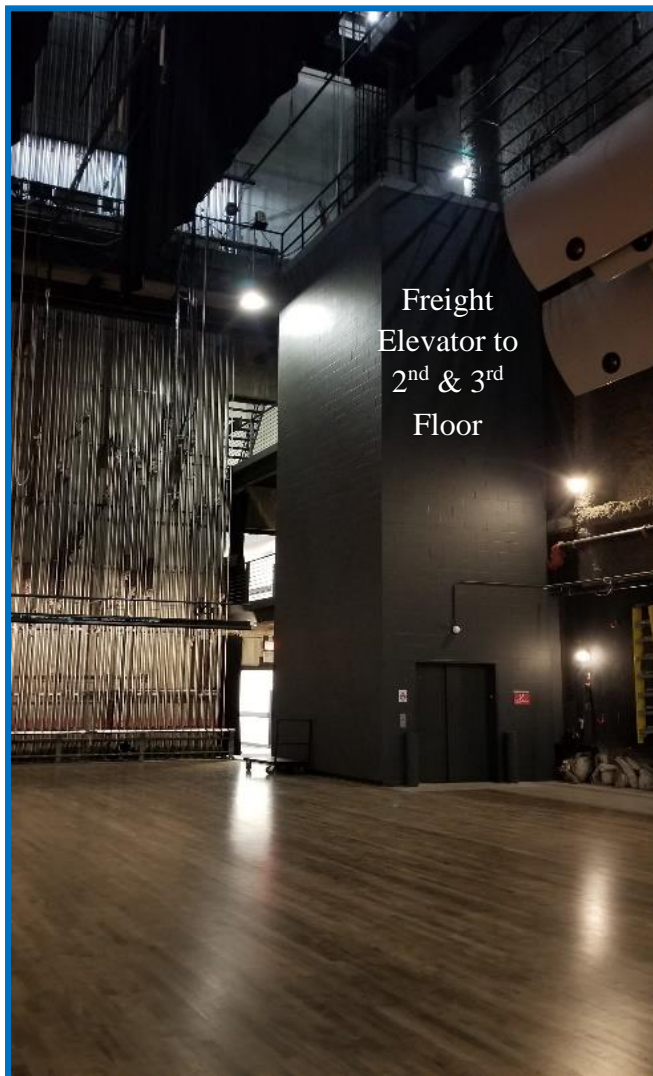


Water
17” x 13” x 12” deep sink with hot & cold running water off stage left.



Doorway to
Orchestra Pit

66' x 14' Instrument Storage & Musicians Warm Up Area Below the Stage



Freight
Elevator to
2nd & 3rd
Floor

Access to the 2nd & 3rd Floors via Freight Elevator

Dressing Rooms, Green Room, & Laundry/Wardrobe Room

(All rooms located off stage right)

Main Floor, Stage Level

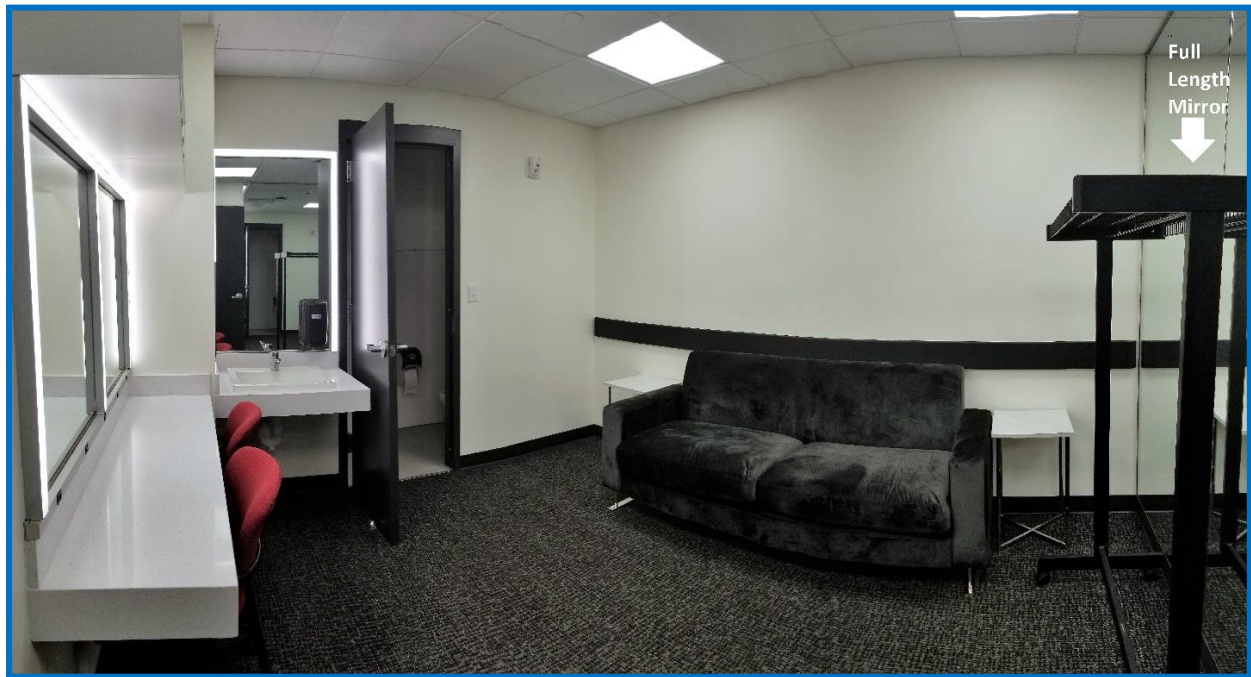
2 Identical Star dressing rooms, 1A & 1B, with sink, shower & toilet in the room

2, four person dressing rooms, 1C with sink, shower & toilet in room, 1D with sink, disabled access toilet in room, no shower.

Green room with access to house, and to backstage. Usually used for production, stage managers, etc.

This floor also has 1 men's & 1 women's restroom, with no showers, at the end of the hallway.

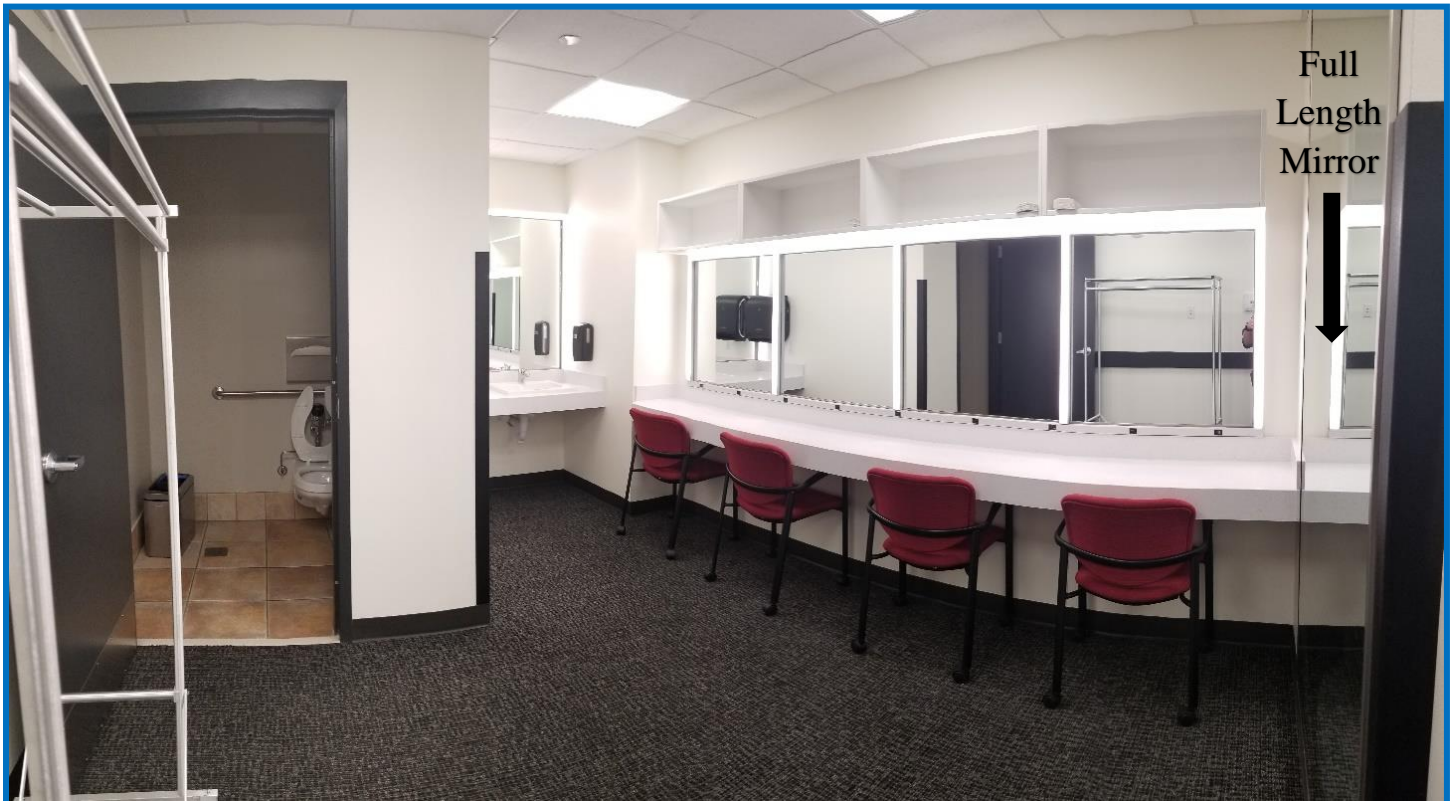
(See pictures below, some taken in panoramic mode so they may seem a little distorted)



Main Floor Dressing Rooms 1A & 1B – 10.5' x 12' (1–2 Person)



Main Floor Dressing Room 1C – 11' x 12' (4 Person)



Main Floor Dressing Room 1D – 11' x 15' (4 Person)



Main Floor Green Room / Production Office – 19' x 19'

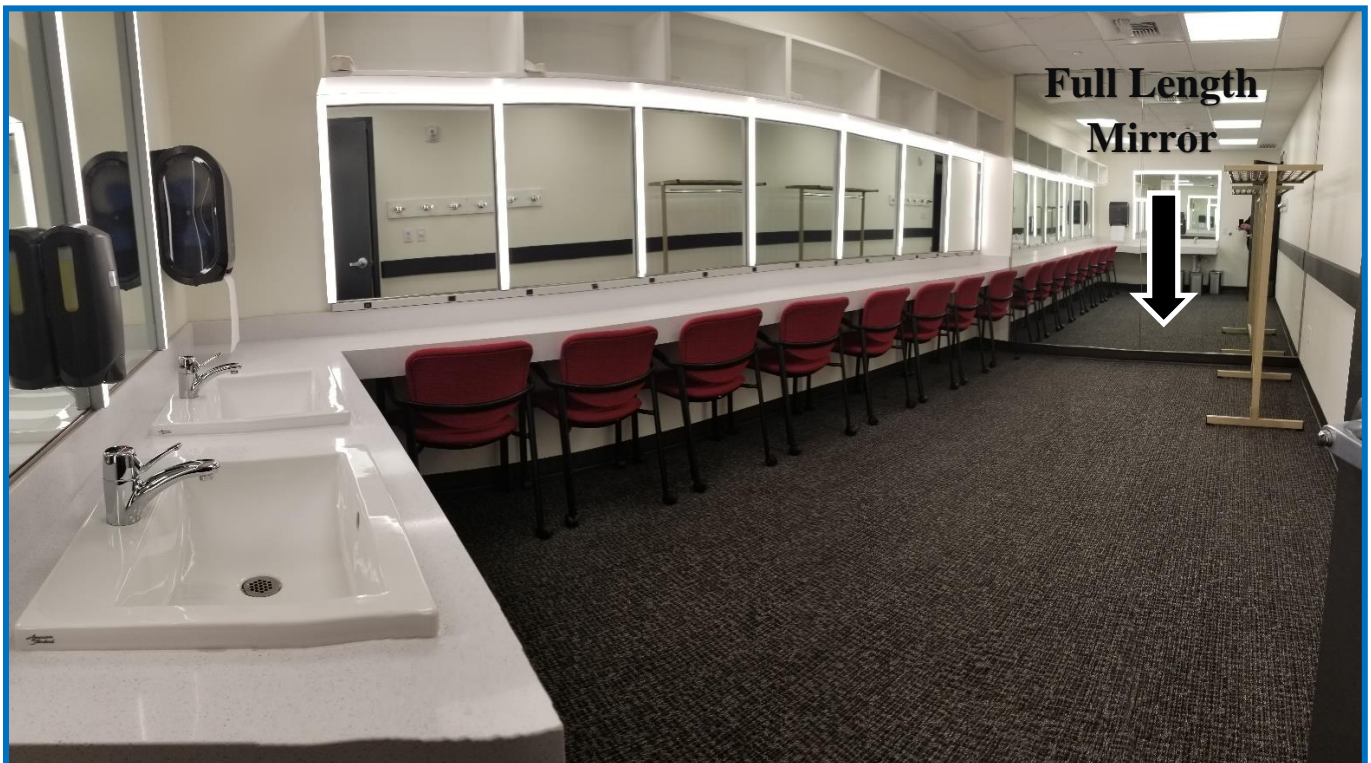
Second Floor

2 - 7 person dressing rooms, (2E & 2F), & 1 - 12 person, (2G).

2 sinks in each room, no restrooms. (See Pictures Below)

1 men's & 1 women's restroom at the end of the hallway, each with sinks, mirrors & 2 showers.

1 - laundry/wardrobe room with 3 Speed Queen commercial duty washers & dryers, pictured below.



2nd Floor Dressing Rooms 2E & 2F – 10'6" x 19'6" (7 Person)



2nd Floor Dressing Room 2G – 26' x 22' (12 Person)



**2nd Floor 16' x 20' Laundry / Wardrobe Room
STRICTLY FOR SHOW USE ONLY, NO PERSONAL LOADS!**

Third Floor

2 - 7 person dressing rooms, (3H & 3I), & 1 large, 4 person, (3J). 2 sinks in each room. (See Pictures Below)
1 men's & 1 women's restroom, each with sinks, mirrors, no showers on this level.



This open space gets used as a meal area for catering when needed, and the picture reflects the standard set up for that.



Dressing Rooms 3H & 3I – 9'6" x 19'6" (7 Person)



Dressing Room 3J – 18' x 20' (4 Person, with extra space)

Facility Internet Access

The First Interstate Center for the Arts can provide a 1 Gbps hard line internet connection to the production office prior to your arrival. This connection provides a DHCP address to your router, so please have the WAN port configured for DHCP addressing. Backstage Wireless access is also available, separate from our public Wi-Fi. The facility employs full time IT staff that can be available as requested. **Charges may apply.**

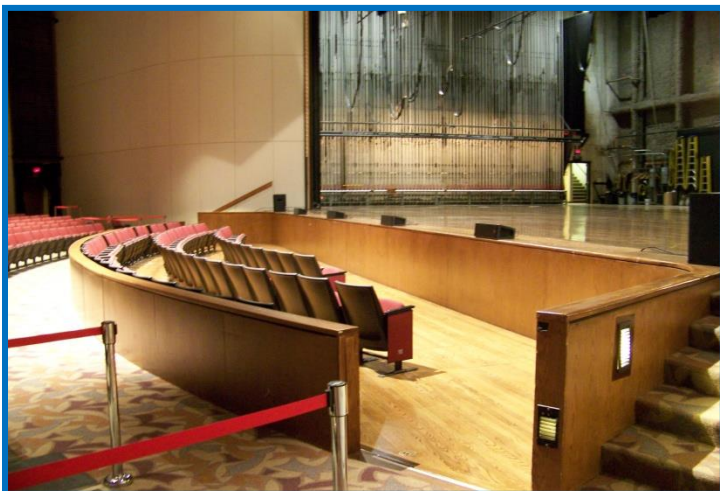
Orchestra Shell

The in house orchestra shell is a “Wenger Diva” shell that consists of 7 - 32’ high walls and 4 ceiling pieces that are hung from the counterweight arbor system. Ceiling pieces are stored all the way upstage on fixed chain motors. The shell walls are stored off stage in the USL storage area, pictured on page #5. **THE SHELL IS USUALLY IN ITS STORED POSITION AND IS CURRENTLY NOT NOTED ON THE HANGING LINE PLOT. THE COST TO MOVE IT IS A PROMOTER’S EXPENSE.**

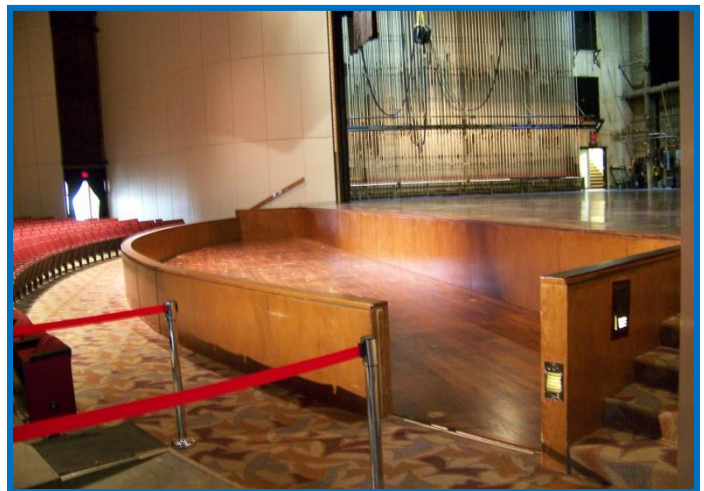


Orchestra Pit

Crescent shaped, approximately 60’ wide by 15’ deep @ center and 8’ deep on each end. It is equipped with a hydraulic operated lifting platform which lifts from a low point of 10 feet below stage level to a high point, level with the stage. There are no stage traps or stage elevators. The orchestra pit has a capacity of 78 sellable seats that includes 2 for disabled seating. Orchestra Pit Floor to Stage Level is 41”.



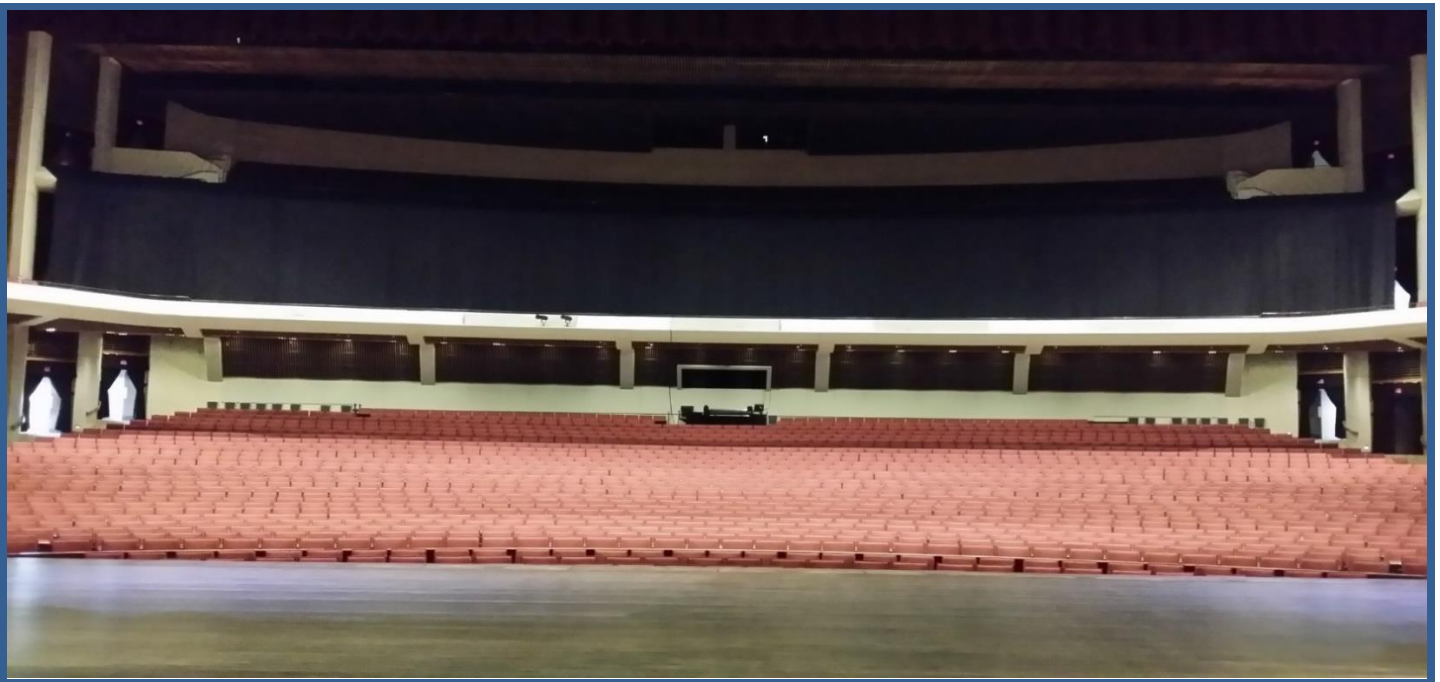
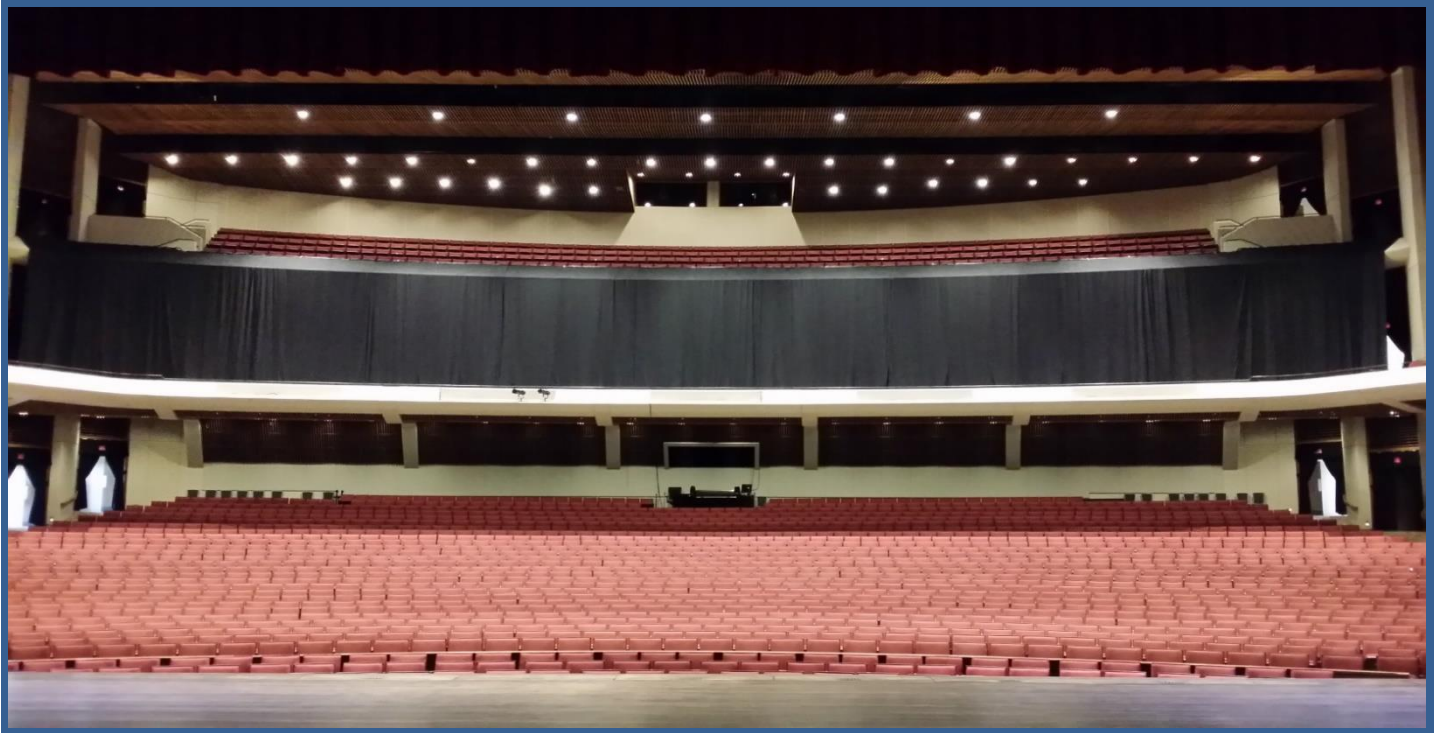
Orchestra Pit with the seats and Front Fill Speakers in Place.



Orchestra Pit with the seats taken out and no Front Fill Speakers.

Front of House Balcony Curtain

Want to turn our 2602 seat, 3 level Auditorium into a 1793 seat, single level Auditorium? Have our Balcony Curtain Installed. It hangs from the Balcony level hand rail, down to the Terrace level floor. The pictures below show the curtain with all of the house lights on, and then with the upper level house lights off. The Terrace and Balcony level seats practically disappear when the house lights are completely out!





Facing the Stage from the Back of House



Facing the House From Up Stage Center

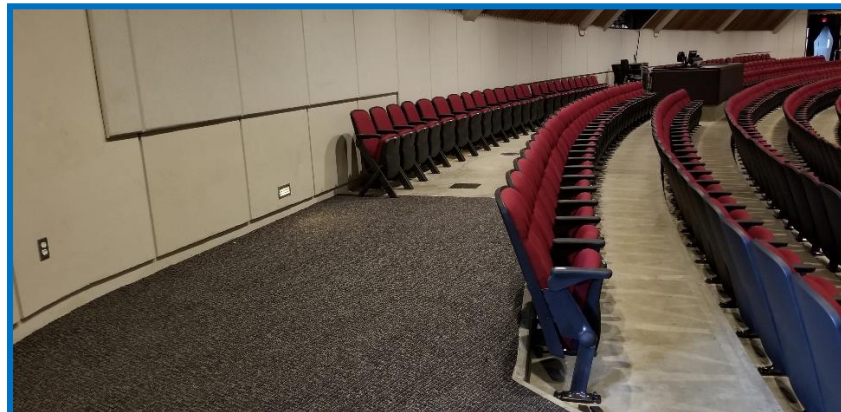
Front of House Mix Positions.

There are 2 main FOH positions, located at the rear of the house, orchestra level, all the way house right, and at center. The house right location is 16' wide x 7'6" deep. The center platform is 13'6" wide x 11'6" deep. Typical set up is sound at center, or house right, & lighting in the 15' wide x 10' deep lighting booth at the rear of the house. Stage DMX Lighting Control is available in the booth. Approx. 225' of snake needed to reach down stage from the house right location. The center mix position and booth runs take 300' of snake to reach down stage left and right. The house audio console lives at center and **cannot** be removed as it connects life safety systems and audio to several parts of the building (**See Pictures Below**). There is enough space for a small to medium size road show consoles and we can move our system to the corner leaving an area for road equipment, about 6' wide. (See pictures below).



Center Mix Position w/ House Audio Gear

(The House Audio Gear needs to stay in place but there is room for a small to medium size console next to it).



House Right Mix Position

House Audio Equipment

(Charges may apply to use the systems).

Main Speaker Cluster (This system is always hung just above the proscenium).

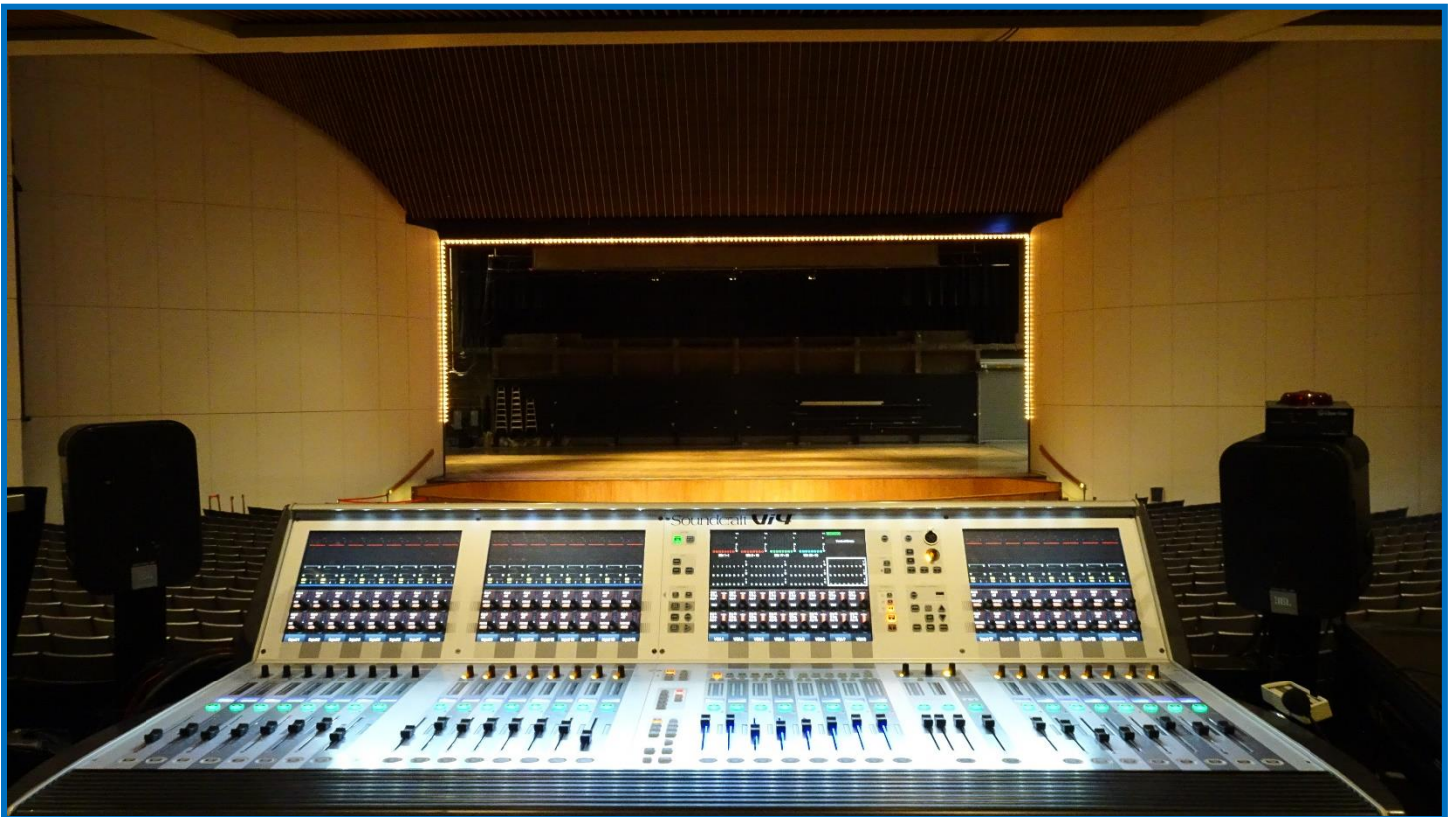
The First Interstate Center for the Arts is equipped with a **Meyer Self Powered MSL-4 based system**. It is flown in a stereo configuration with each side consisting of 4 MSL-4's and 2 DF-4's, and 2 HP-700 Subwoofers are permanently rigged at center. 2 UPA-1P's & 4 MID's cabinets are used for front fill of the orchestra pit. This system is controlled by the Meyer Galileo Control System. The House mix position is out in the open, located in the back of the Orchestra Level. See picture below.

"Stacks & Racks" Available (This system is not permanently hung, and the use of it needs to be pre-arranged).

If you need more "horsepower" than the MSL-4 system, the facility also owns a **Meyer Leopard Line Array System** consisting of 18 Leopards and 3 - 1100-LFC's per side, controlled by a Meyer Galaxy Processor.

FOH Audio Console

Soundcraft Vi400 Digital Audio Console. 72 input channels, 32 Aux, Mtx, or Group Outputs. Gate/Comp/Limiter on every channel, 8 Assignable Lexicon Multi Effects Processors built in. See picture below.



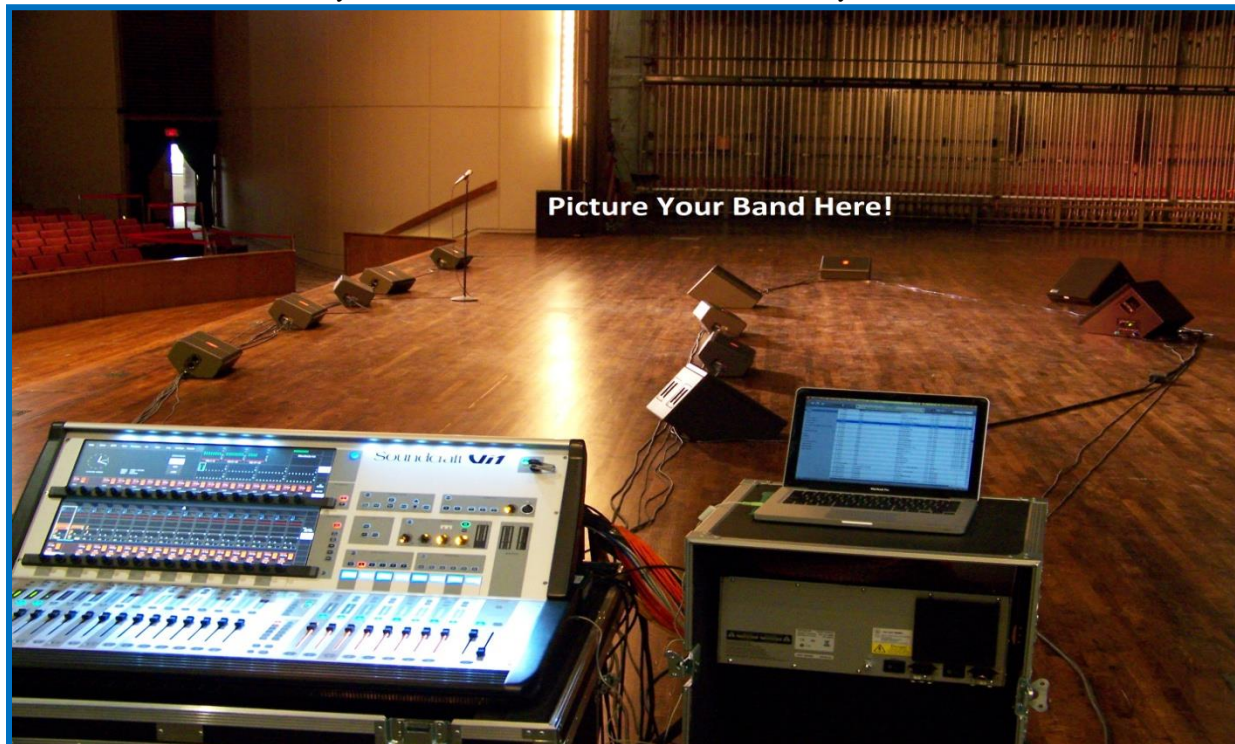
In House Monitor Rig

The in house monitor desk is a Soundcraft Vi1 capable of 16+ mixes. (Charges may apply)

4 Assignable Lexicon Multi Effects Processors built in.

All of our passive monitor cabinets are listed below and powered by Crown & QSC Amplifiers.

2 – Meyer USM-100P Self Powered 2 – Meyer UM-100P Self Powered 4 – Meyer MJF-210 Self Powered
9 – JBL SRX-712M 4 – EAW 1502's 6 - EAW 1202's 6 – EV SX-300's
2 – Meyer MSL4's for Side Fills 2 – Community TS-18 Subs



Microphone Selection

Shure SM 57 (15)	AKG C 1000 S (2)	Sennheiser e935 (4)
Shure Beta 57A (2)	AKG C 3000 B (2)	Sennheiser 421 (4)
Shure SM58 (12, 6 w/switch)	AKG 414-B-ULS (2)	Crown PCC-160 (5)
Shure Beta 58A (3)	AKG - C414-XLS (2)	Crown PX-18 PZM (2)
Shure Beta 52A (1)	AKG 451 EB w/CK1 capsules (9)	Neumann KMi 84 (2)
Shure Beta 98 (6)	AKG CK8 Shotgun Capsules (5)	Fostex M20RP Stereo Mic (1)
Shure SM 81 (4)	AKG CK9 Shotgun Capsules (6)	Crown SASS-P MK-II Stereo PZM (1)
Shure KSM 137 (2)	AKG SE5E-10 w/CE1 capsules (2)	Earthworks PM-40 Grand Piano Mic (1)
EV RE-20 (2)	Countryman E6 headset mics (2)	Barcus Barry 4000XL Piano Mic (1)
EV PC/12 lectern mic (2)	Countryman DT 85 Direct Box (3)	Radial Pro AV2 Direct Box (4)

4 - Shure UHF-R wireless mic systems with 4 – UR2 Handhelds with Standard SM58 capsules.
(Other Capsules available are; 2 Beta 58A, 2 Beta 87A, or 2 - KSM9)
4 - UR 1 body packs w/ WL184 Lavalier Mics, or 2 – WB98H/C Instrument Mics.

In House Pianos

7' Mason & Hamlin Model BB Grand Piano.

9' Baldwin Model D Grand (Available only in the Lounge).

Kawai UST-7 Upright Studio Spinnet.

Yamaha P-115B Digital Piano with 88 weighted keys.

Please call ahead for availability, rental, & tuning costs. Tuning of pianos must be done by a SPFD approved tuner.

Assistive Listening System

We use a "Listen Technologies" FM Broadcast system. Receivers & headsets available in our Guest Services Office.

House Electrical & Lighting Equipment.

Stage Power

- 3 – 400 amp 3 phase 5-wire 120\208 down stage right for lighting. Camlok or Lug tie in.
- 1 – 400 amp 3 phase 5-wire 120\208 down stage left for sound. Camlok or Lug tie in.
- 1 – 200 amp 3 phase 5-wire 120\208 up stage left. Camlok tie in.
- 1 – 200 amp 3 phase 5-wire 120\208 up stage right. Camlok tie in only with 4 – L21-30, thirty amp, 3 phase twist locks on the side.
- 1 – 100 amp 3 phase 5-wire 120\208 up stage right. Camlok tie in only with 2 – L21-20, twenty amp, 3 phase twist locks on the side.

Lighting Control System

ETC Sensor Dimming Racks, 384 channels, all 20 amp circuits. 2 ETC ION Lighting Consoles.
 Lighting control can be from the FOH lighting booth or off stage right. DMX connections in booth so system can be accessed by road gear if needed.

FOH Lighting Booth

This booth is 15'w x 10'd and is located behind the orchestra level seating at center and is raised above the seats. This is the preferred location for road show lighting since no seat kills are needed. It's a distance of 117' 6" from the front edge of the stage, has a sliding glass window (10'6"w x 3' h) and is equipped with a sink & toilet.

Front of House Lighting

- 1st Catwalk**, 12 circuits, catwalk is just above and down stage of the proscenium, 32ft. from down stage center.
- 2nd Catwalk**, 24 circuits, currently all circuited with Berkey 10 degrees, 57ft. from down stage center.
- 3rd Catwalk**, 28 circuits, currently circuited with 18 ETC Color Source Spots & 10, 750W Source 4's, all with 10 degree lenses, 70ft. from down stage center.
- 1st Balcony**, 16 circuits, plus 1 non-dim circuit, 95ft. from down stage center.
- 2nd Balcony**, 8 circuits, plus 1 non-dim circuit, 110ft. from down stage center.
- Box Booms, Left & Right**, 9 circuits on each side, 86ft. from down stage center.

Stage Lighting

- 1st Electric**, 30 circuits.
- 2nd, 3rd, 4th, & 5th Electrics**, 24 circuits each.
- Floor Pockets**, 5 floor pockets stage right, 5 floor pockets stage left, & 8 floor pockets upstage. Each with 3 circuits and 1 non-dim.

Fixture Inventory

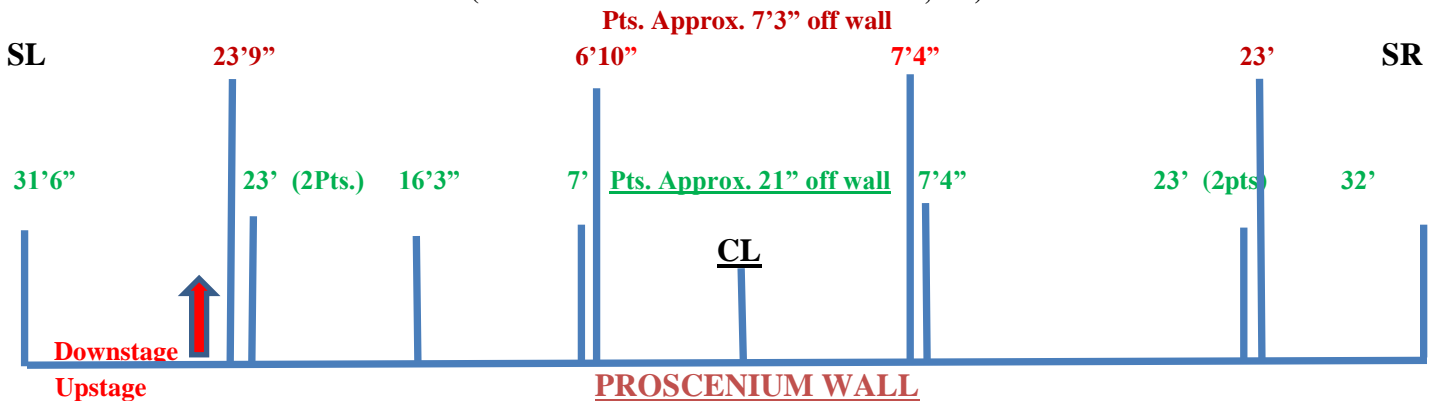
12 - Chauvet Maverick MK-1 Movers with Hanging Hardware	8 - ETC Color Source Cyc Lights with Floor & Hanging Hardware		
15 - ETC Selador Vivid-R LED Fixtures with Floor & Hanging Hardware	60 - Par 64 MFL	60 - ETC Source 4 Pars	
24 - Source Four 19'	6 - Altman 6 x 16	60 - 8" Fresnel	10 - Elation EPAR QA
24 - Source Four 26'	36 - Altman 6 x 9	2 - Mole Audience Lts	
24 - Source Four 36'	16 - Altman 6 x 12		
6 - Source Four 50'	6 - Berkey 10'	8 - Berkey Zoom 6 x 16	

House Spotlights & Spotlight Booth

3 - Lycian model #1295 - 3k and, 1- Lycian model #1290 - 2k. Located behind the 2nd balcony wall at center, a distance of approximately 125' from the front edge of the stage. Approximate size is 13' x 25' and it's enclosed (**Charges may apply**).

Downstage of the Proscenium Wall Rigging Points

(Measurements are off of the center line, CL)



Stage dimensions and measurements.

Maple Hardwood Floor, 93'W x 51'D. Max drill depth is 2".

Proscenium: Max opening 66' 0" wide x 26' 6" high.

Stage height from Orchestra Pit floor to stage floor, in seated position, 41".

Orchestra Pit back wall height, 32".

Curtain control and working fly floor located stage right, single purchase.

DISTANCES FROM –

Edge of apron to orchestra and balcony level back wall -	117' – 6"
Edge of apron to upstage back wall -	59' – 4"
Balcony rail to proscenium -	99' – 0"
Proscenium wall to upstage back wall -	54' – 4"
Proscenium wall to upstage crossover bridge -	50' – 0"
House curtain to upstage back wall -	52' – 0"
House curtain to upstage crossover bridge -	47' – 8"
Apron to Fire Curtain (Smoke Pocket is 1ft. deep)	5' - 0"
Apron to House curtain -	7' – 4"
Apron to house curtain with the pit raised –	23' – 4"
Center stage to stage right wall -	55' – 3"
Center stage to stage left wall –	94' – 3"
Center Stage to auxiliary pin rail platform, stage right -	47' – 9"
Center Stage to auxiliary pin rail platform, stage left -	51' – 0"
Floor height of stage right & left pin rail platforms from stage floor -	37' – 4"
Clearance of stage right & left pin rail platforms -	34' – 11"
Bottom of 1 st catwalk to stage floor. Catwalk is just above and down stage of the proscenium.	31' – 2"
Floor height of upstage crossover bridge from stage floor -	37' – 4"
Clearance of upstage crossover bridge -	34' – 8"
Counterweight locking rail located on stage floor & extending from stage right wall -	3' – 3"
Floor height of counterweight loading bridges from stage floor –	
Lower bridge -	62' – 6"
Upper bridge -	70" – 6"
Clearance of lower counterweight loading bridge -	61' – 10"
Distance between the stage left & right pin rail platforms -	93' – 6"
Height to top of grid -	75' – 8"
Clearance of grid -	74' – 6"
Flying clearance -	74' – 0"

INB PERFORMING ARTS CENTER
COUNTERWEIGHT ARBOR INFO AND HANGING PLOT



Single Purchase Fly Rail System Stage Right

Grid Flying Clearance Height of 74'. Fire curtain and smoke pocket must be observed. Fire curtain starts 5ft. upstage from the downstage edge, apron.

The smoke pocket is 1ft. deep.

Pyro permits and licenses are required. See page #21 for details.

Single purchase counterweight locking rail located on stage floor & extending from stage right wall - 3' - 3"

Floor height of counterweight loading bridges from stage floor -

Lower bridge - 62' - 6"

Upper bridge - 70' - 6"

Clearance of lower counterweight loading bridge - 61' - 10"

Length of pipe battens is 72' - 0". Pipe batten diameters; 1-1/2' I.D., 1-7/8" O.D...

House Goods.

Crimson main drape.

5 sets of 30' x 30' flat black legs plus black borders with 50% fullness.

All black legs are 30' x 30' flat panels.

4 - 30' x 30' flat crimson panels for guillotine curtain.

80' Blackout upstage.

6 - 10' Black side tabs.

80' x 30' Sky Cyc.

70' x 30' Black Scrim.

70' x 30' White Scrim.

32' x 20' Rear screen projection surface. (Flyable only, no ground support)

24' x 24' Front projection roll screen. (Flyable only, no ground support)

COUNTERWEIGHT ARBOR HANGING PLOT

<u>SET#</u>	<u>Distance From Downstage Wall</u>	<u>Use Description</u>	<u>Lift Capacity</u>	<u>No. Lines</u>	<u>Remarks</u>
1	1'5"	Crimson Border	1200	7	All pipes are schedule 80 except # 1, it is schedule 40
2	2'1"	Crimson Masking Legs	1200	7	
3	2'5"	Set	1500	9	
4	2'11"	Crimson Guillotine	1200	7	
5	3'5"	Set	1200	7	
6	3'11"	Set	1200	7	
7	4'5"	1 st Electric-30-20 Amp Circuits	1200	7	Spot Pipe / 1 st Electric Truss
8	4'11"	Set	1200	7	
9	5'5"	Set	1200	7	
10	5'11"	Set	1200	7	
11	6'5"	Set	1200	7	
12	6'11"	Set	1200	7	
13	7'5"	Crimson Border	1200	7	
14	7'11"	Black Border	1200	7	
15	8'5"	Intermediate Crimson Traveler	1500	9	85' Traveler Track
16	8'11"	Set	1200	7	
17	9'5"	#1 Black Legs	1500	9	80' Pipe
18	9'11"	Set	1200	7	
19	10'5"	Set	1200	7	
20	10'11"	Set	1200	7	
21	11'5"	2 nd Electric-24-20 Amp Circuits	1200	7	2 nd Electric Portable
-FLYRAIL STRUCTURAL SUPPORT-					
22	12'5"	Set	1200	7	
23	12'11"	Set	1200	7	
24	13'5"	Set	1200	7	
25	13'11"	Set	1200	7	
26	14'5"	Set	1200	7	
27	14'11"	Set	1200	7	
28	15'5"	Black Border	1200	7	
29	15'11"	# 2 Black Legs	1500	9	80' Pipe
30	16'5"	Set	1200	7	
31	16'11"	Set	1200	7	
32	17'5"	Set	1200	7	
33	17'11"	3rd Electric-24-20 Amp Circuits	1200	7	3 rd Portable Electric
34	18'5"	Set	1200	7	
35	18'11"	Set	1200	7	
36	19'5"	Set	1200	7	
37	19'11"	Set	1200	7	
38	20'5"	Set	1200	7	
39	20'11"	Set	1200	7	
40	21'5"	Set	1200	7	
41	21'11"	Set	1200	7	
-FLYRAIL STRUCTURAL SUPPORT-					
42	22'11"	Black Border	1200	7	
43	23'5"	#3 Black Legs	1500	9	80' Pipe
44	23'11"	Set	1200	7	
45	24'5"	Set	1200	7	
46	24'11"	Set	1200	7	
47	25'5"	Set	1200	7	

48	25'11"	4 th Electric–24–20 Amp Circuits	1200	7	4 th Portable Electric
49	26'5"	Set	1200	7	
50	26'11"	Set	1200	7	
51	27'5"	Set	1200	7	
52	27'11"	Set	1200	7	
53	28'5"	Set	1200	7	
54	28'11"	Set	1200	7	
55	29'5"	Set	1200	7	
56	29'11"	Set	1200	7	
57	30'5"	Black Border	1200	7	
58	30'11"	Black Legs	1200	7	80' Pipe
59	31'5"	Blue Scrim	1200	7	
60	31'11"	Blue Cyc	1200	7	
61	32'5"	Set	1200	7	
62	32'11"	Set	1200	7	
-FLYRAIL STRUCTURAL SUPPORT-					
63	33'11"	Set	1200	7	
64	34'5"	Set	1200	7	
65	34'11"	5 th Electric–24–20 Amp Circuits	1200	7	5 th Portable Electric
66	35'5"	Set	1200	7	
67	35'11"	Set	1200	7	
68	36'5"	Set	1200	7	
69	36'11"	Set	1200	7	
70	37'5"	Set	1200	7	
71	37'11"	Set	1200	7	
72	38'5"	Set	1200	7	
73	38'11"	Set	1200	7	
74	39'5"	Set	1200	7	
75	39'11"	Set	1200	7	
76	40'5"	Black Backdrop	1200	7	
77	40'11"	Set	1200	7	
78	41'5"	Set	1200	7	

Pyrotechnics Procedures Information

Washington State law requires that a Washington State Licensed Pyrotechnician be present and supervise any proximate (indoor) displays. We work with a Washington State Licensed Pyrotechnician, who is able to secure the various permits on your behalf. Contact S.P.F.D. Tech Specialist Mike Tucker to get this procedure started, 509-279-7171 or mtucker@spokanepfd.org.

The information below is required prior to applying for the various permits.

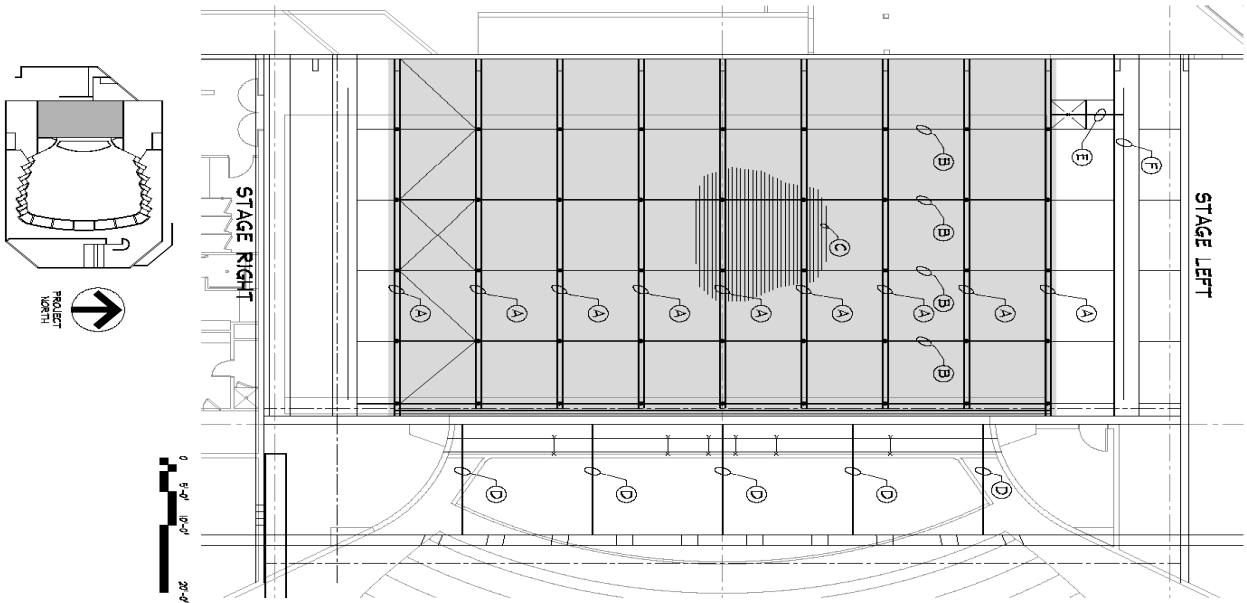
You will need to supply a packet of information which describes what effects will take place, where on the stage they take place, and when during the show they take place. The packet must include certification of flame proofing of any softgoods that the pyrotechnics effects may come in contact with, as well as the MSDS sheets for each compound or component used.

The Pyrotechnician, the Promoter, the Spokane Public Facilities District, and The City of Spokane must be listed as a 'named insured' with your insurance company and a copy of that document must be provided with your information packet.

We will provide a separate, lockable area for storing your portable magazine. This area may also be used to prepare your pyrotechnics effects.

Stage Rigging Load Limits

4/17/2007 10:08:33 AM PROJECT: STAGE RIGGING LOAD LIMITS DRAWING NO: 201-01 DATE PLOTTED: 4/17/2007 10:08:33 AM



<p>DOUBLE CHANNEL CAPACITY</p> <p>MEMBER (A) (SEE PLAN)</p> <p>OR</p> <p>LOADS SHOWN ARE THE MAXIMUM TOTAL LOAD THAT CAN BE SAFELY SUPPORTED DIRECTLY ON MEMBER A AND LOADS SUPPORTED BY MEMBERS B & C. SELF HEIGHT OF MEMBERS A, B, & C IS ACCOUNTED FOR.</p>	<p>EXISTING STAGE CAPACITY</p> <p>MEMBER (B) (SEE PLAN)</p> <p>OR</p> <p>LOADS SHOWN ARE THE MAXIMUM TOTAL LOAD THAT CAN BE SAFELY SUPPORTED BY MEMBER B. THIS MUST INCLUDE LOADS SUPPORTED DIRECTLY ON MEMBER B AND LOADS SUPPORTED BY MEMBERS A, C, D, E, & F. SELF HEIGHT OF MEMBER B CANNOT EXCEED THE NOTED CAPACITY FOR MEMBER A. SELF HEIGHT OF MEMBERS A, B, & C IS ACCOUNTED FOR.</p>
<p>LEAFY CAPACITY</p> <p>MEMBER (D) (SEE PLAN)</p> <p>OR</p> <p>LOADS SHOWN ARE THE MAXIMUM TOTAL LOAD THAT CAN BE SAFELY SUPPORTED BY MEMBER A.</p>	<p>LEAFY CAPACITY</p> <p>MEMBER (E) (SEE PLAN)</p> <p>OR</p> <p>LOADS SHOWN ARE THE MAXIMUM TOTAL LOAD THAT CAN BE SAFELY SUPPORTED BY MEMBER E.</p>
<p>LOAD CHART</p> <p>NTS</p> <p>LOADS SHOWN ARE THE MAXIMUM TOTAL LOAD THAT CAN BE SAFELY SUPPORTED BY MEMBER C. THESE LOADS COVERED WITH LOADING ON MEMBER B CANNOT EXCEED THE NOTED CAPACITY FOR MEMBER B. SELF HEIGHT OF MEMBERS A, B, & C IS ACCOUNTED FOR.</p>	
<p>NOTE:</p> <p>ALL LOADS SHOWN ARE STATIC LOADS AND DO NOT INCLUDE DYNAMIC EFFECTS.</p> <p>TOTAL STATIC LOAD CAPACITY FOR RIGGING AREA INSIDE THE SHADOW AREA IS 150 TONS.</p>	

THESE LOADS ARE BASED ON AS-BUILT DRAWINGS AND FIELD OBSERVATIONS MADE IN JULY 2007. ANY MODIFICATION TO THE BUILDING STRUCTURE OR RIGGING STRUCTURE WILL NULLIFY THIS DOCUMENT.

Date: 07-27-07
 Job No.: 2079-02
 Drawn By: YH
 Checked By: TE
 Filename: 714-1-1
 Revision:

INB PERFORMING ARTS CENTER
 SPOKANE, WASHINGTON

INTEGRUS
ARCHITECTURE

100 SOUTH CEDAR - SPOKANE, WA 99204
 TEL: 509.325.8888 FAX: 509.325.8889

Choral Risers

We Have 12, StageRight FR-36, three or four step risers with back rails. (Charges may apply)



Sources for Production Needs.

Instrument & Backline Rentals

Hoffman's Music Connection 1-888-289-6266
Pro Sound Audio (509)995-4424

Piano Rentals

Steinway of Spokane (509)327-4266
Music City (Yamaha Dealer) (509)838-8312

Vehicle Rentals

Thrifty Car Rentals (509)924-9111

Fire Extinguishers

General Fire 4004 E. Trent, Spokane
6010 E. Broadway, Spokane

Decorators

LCD Exposition Services (509)325-9656
DE Expo & Event Services. 1-800-840-2280
Event Rents (509)535-4030

Fire Marshall

(509)625-7056 or (509)625-7048

Dry Cleaning

Clark's Cleaners (509)838-6120
159 S. Division St. (Personal Needs)
Susie's Laundromat & Dry Cleaners
920 S. Monroe (509)624-8975 (Show Needs)

Lighting & Staging Rentals

V.I.P. Production Company (800)801-4804
Impact Lighting Systems, LLC (208)676-1684
AMP'D Entertainment (509)838-9861

Pro Audio System Rentals

V.I.P. Production Company (800)801-4804
Pro Sound Audio (509)995-4424
Hoffman's Music (509)444-4140
AMP'D Entertainment (509)838-9861

Production Services

V.I.P. Production Company (800)801-4804
Impact Lighting Systems, LLC (208)676-1684
AMP'D Entertainment (509)838-9861

Audio Visual Equipment

The Facility has an Extensive In House A/V Dept.
Mike Tucker (509)279-7171/ mtucker@spokanepfd.org

CO2 & Dry Ice

OXARC (509)535-7794
A-L Compressed Gases (509)534-1595

Costco Wholesale

5601 E. Sprague Ave, Spokane (509)842-0000

Rigging Supplies

Broadway Industrial Supply (800)521-8184
5510 E. Broadway Ave, Spokane
Fasteners Rigging Shop (509)535-4212
5220 E. Broadway Ave, Spokane

Office Equipment

ABC Office Equipment (509)922-4600
Empire Office Equipment (509)327-5507

Ambulance/Paramedics

American Medical Response
Brandy Tarala (509)979-7874 brandy.tarala@amr.net

Furniture Rentals

Fred's Appliance (509)328-3824
2525 N. Monroe, Spokane

Limousine & Transportation Services

Ambassador Chauffeured Transportation (509)448-0997

Lowe's Home Improvement

5204 E. Sprague Ave. Spokane (509)533-0066

The Home Depot

5617 E. Sprague Ave, Spokane (509)534-8588